

- LEGEND**
- RAILWAY STATIONS
 - DEVELOPMENT BOUNDARY
 - 100M BUFFER
 - RESIDENTIAL RECEPTORS
(MODERATE-SIGNIFICANT
PRE-MITIGATION EFFECT)
 - RESIDENTIAL RECEPTOR
GROUPS

Disclaimer
© Irish Rail (2023). This drawing is confidential and the copyright in it is owned by Irish Rail. This drawing must not be either loaned, copied or otherwise reproduced in whole or in part or used for any purpose without the prior permission of Irish Rail.

© Ordnance Survey Ireland and Government of Ireland. All O.S. data used for plans are printed under "Copyright Ordnance Survey Ireland 0039723 (OSI Aerial Data or OSI Lidar Data) & 2023/ OSI_NMA_180 (OSI Vector Data)". All elevations are in metres and relate to OSI Geoid Model (OSGM02) Malin Head as defined by existing Project Control. All Co-ordinates are in Irish Transverse Mercator Grid (ITM) as defined by OSI active GPS station Tallaght College (TLLG).

NOTES

Rev	Date	Dm	Chk'd	App'd	Description
P02	31/05/2024	DM	TB	COD	PLANNING ISSUE

Date	05/10/2023	Scale	1:75000 @ A1 1:150000 @ A3	Drawn	DM	Checked	TB	Approved	COD
Project Code	D+WP56	Originator Code	ARP	QMS Code	279933-00				

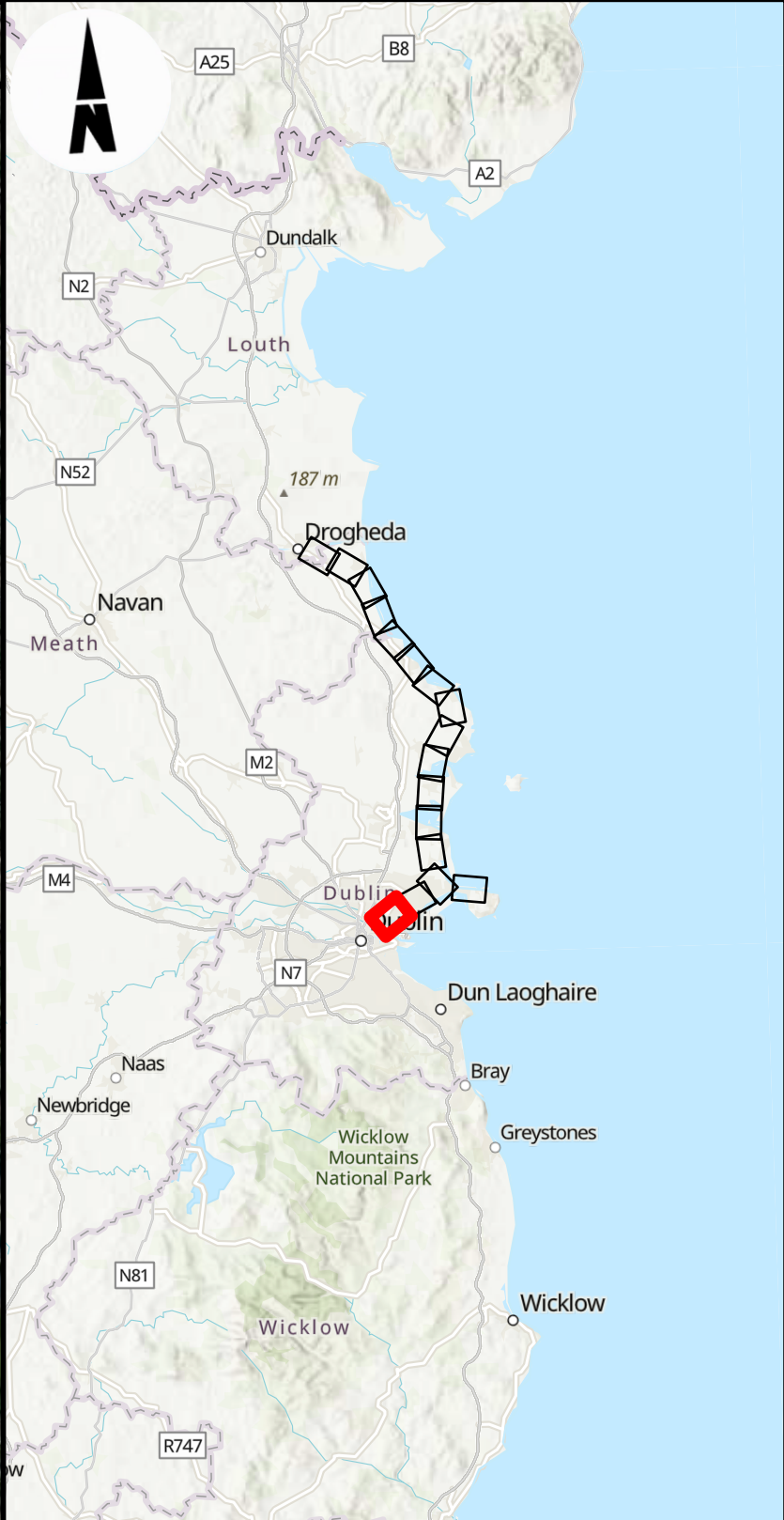
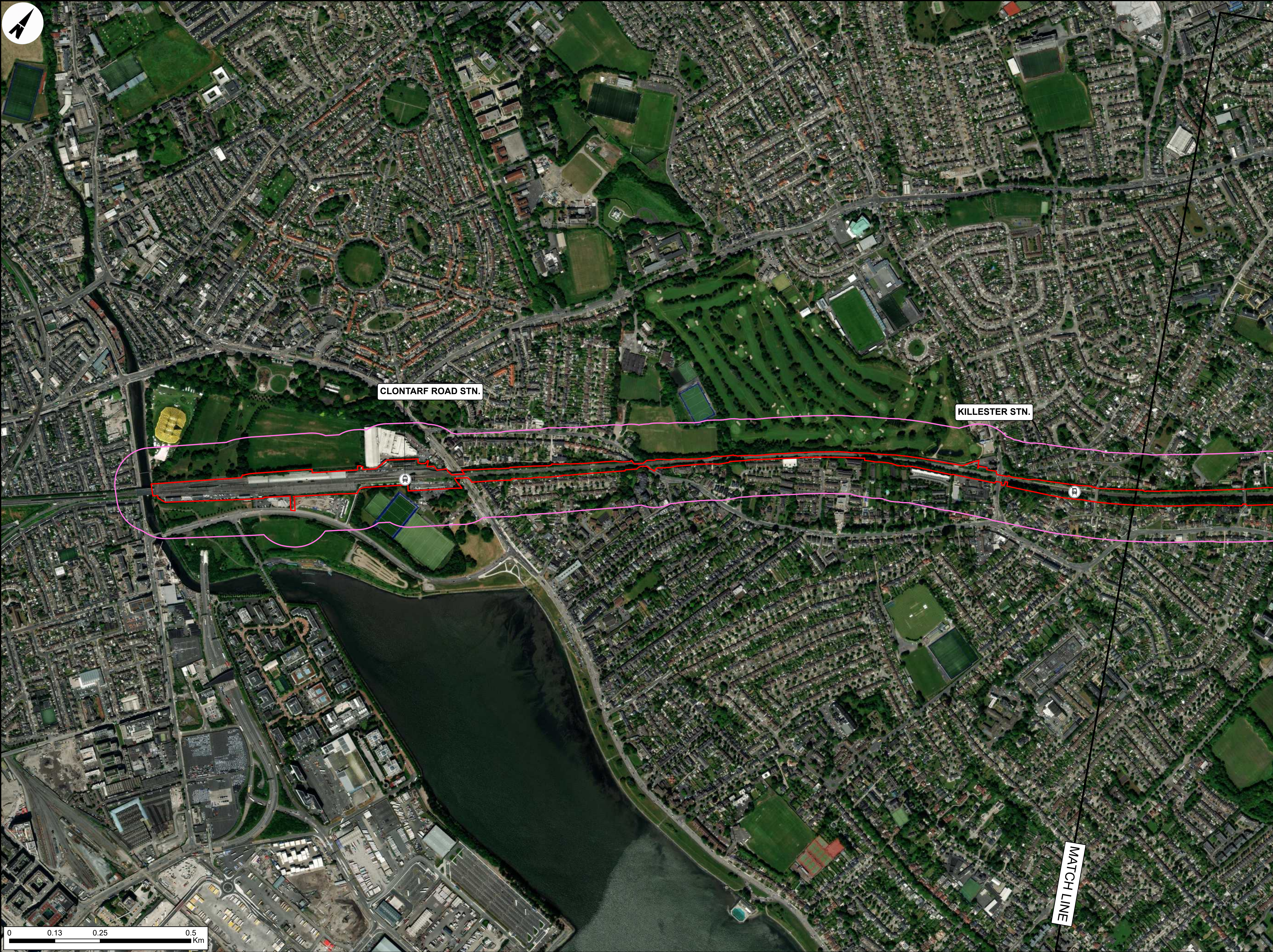
Project Title

DART+ COASTAL NORTH

Drawing Title

LANDSCAPE AND VISUAL AMENITY
FIGURE 15.2: SIGNIFICANT EFFECTS ON RESIDENTIAL RECEPTORS
OVERVIEW

Drawing File Name	D+WP56-ARP-ZZ-NL-DR-EVLA-100001	Sheet Number	1 of 18	Status	S4	Rev	P02
-------------------	---------------------------------	--------------	---------	--------	----	-----	-----



- LEGEND**
- RAILWAY STATIONS
 - DEVELOPMENT BOUNDARY
 - 100M BUFFER

Disclaimer
© Irish Rail (2023). This drawing is confidential and the copyright in it is owned by Irish Rail. This drawing must not be either loaned, copied or otherwise reproduced in whole or in part or used for any purpose without the prior permission of Irish Rail.

© Ordnance Survey Ireland and Government of Ireland. All O.S. data used for plans are printed under "Copyright Ordnance Survey Ireland 0039723 (OSI Aerial Data or OSI Lidar Data) & 2023/ OSI_NMA_180 (OSI Vector Data)". All elevations are in metres and relate to OSI Geoid Model (OSGM02) Malin Head as defined by existing Project Control. All Co-ordinates are in Irish Transverse Mercator Grid (ITM) as defined by OSI active GPS station Tallaght College (TLLG).

NOTES

Rev	Date	Dm	Chk'd	App'd	Description
P02	31/05/2024	DM	TB	COD	PLANNING ISSUE

Date	05/10/2023	Scale	1:5000 @ A1 1:10000 @ A3	Drawn	DM	Checked	TB	Approved	COD
Project Code	D+WP56	Originator Code	ARP	QMS Code	279933-00				

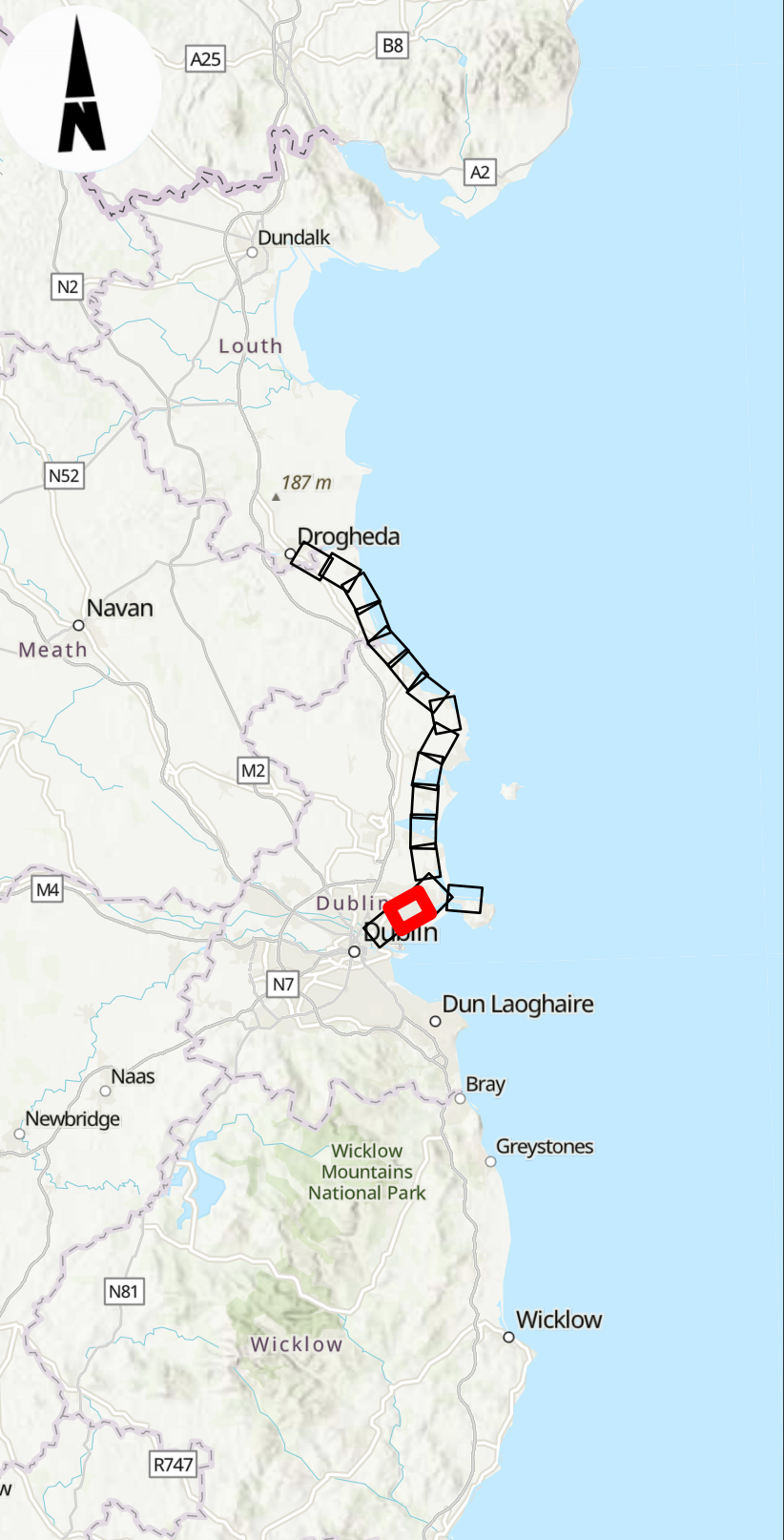
Project Title

DART+ COASTAL NORTH

Drawing Title

LANDSCAPE AND VISUAL AMENITY
FIGURE 15.2: SIGNIFICANT EFFECTS ON RESIDENTIAL RECEPTORS

Drawing File Name	D+WP56-ARP-ZZ-NL-DR-EVLA-100002	Sheet Number	2 of 18	Status	S4	Rev	P02
-------------------	---------------------------------	--------------	---------	--------	----	-----	-----



- LEGEND**
- RAILWAY STATIONS
 - DEVELOPMENT BOUNDARY
 - 100M BUFFER



0 0.13 0.25 0.5 Km

Disclaimer
© Irish Rail (2023). This drawing is confidential and the copyright in it is owned by Irish Rail. This drawing must not be either loaned, copied or otherwise reproduced in whole or in part or used for any purpose without the prior permission of Irish Rail.
© OpenStreetMap contributors.
© Ordnance Survey Ireland and Government of Ireland. All O.S. data used for plans are printed under "Copyright Ordnance Survey Ireland 0038723 (OSI Aerial Data or OSI Lidar Data) & 2023/ OSI_NMA_180 (OSI Vector Data)". All elevations are in metres and relate to OSI Geoid Model (OSGM02) Malin Head as defined by existing Project Control. All Co-ordinates are in Irish Transverse Mercator Grid (ITM) as defined by OSI active GPS station Tallaght College (TLLG).

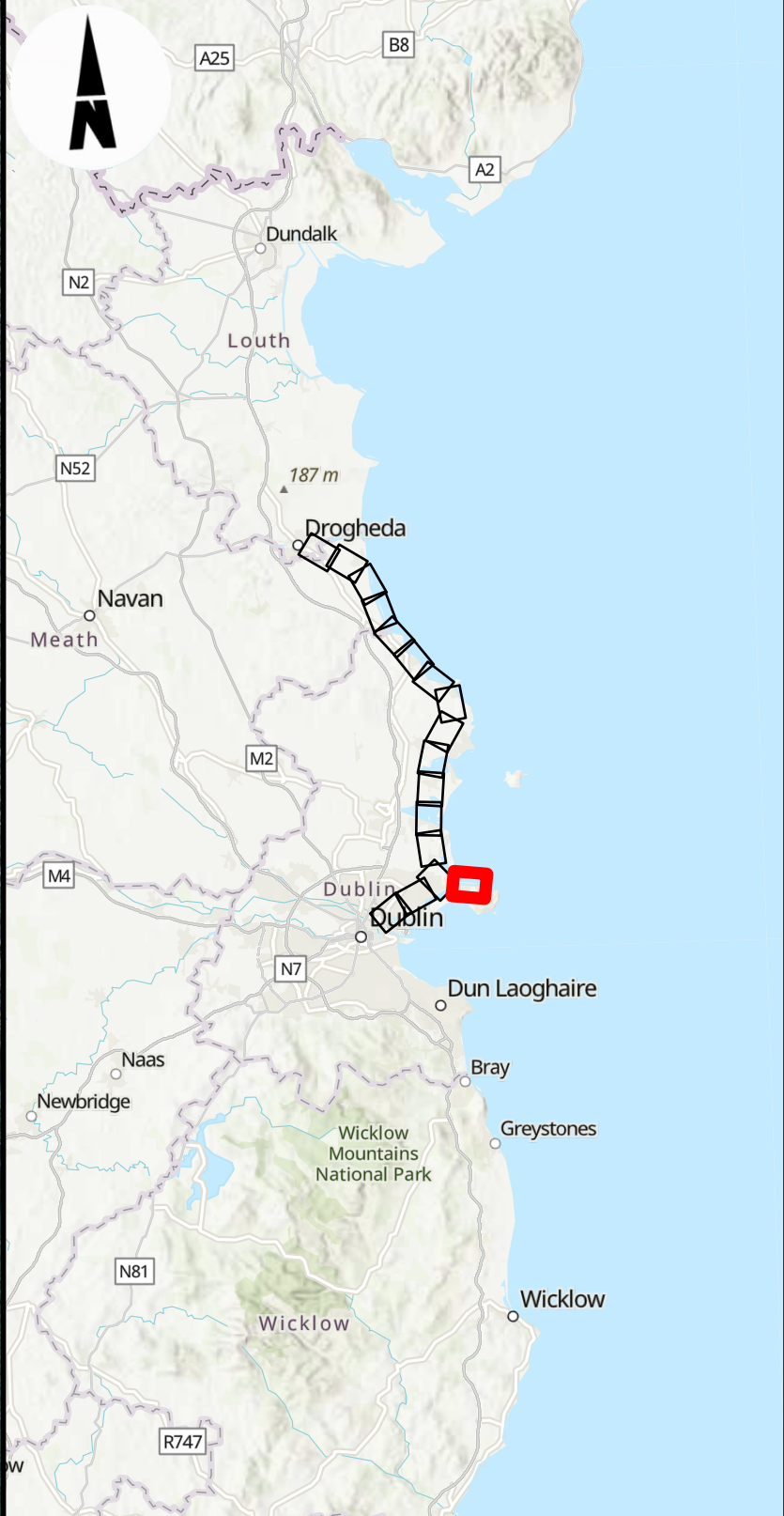
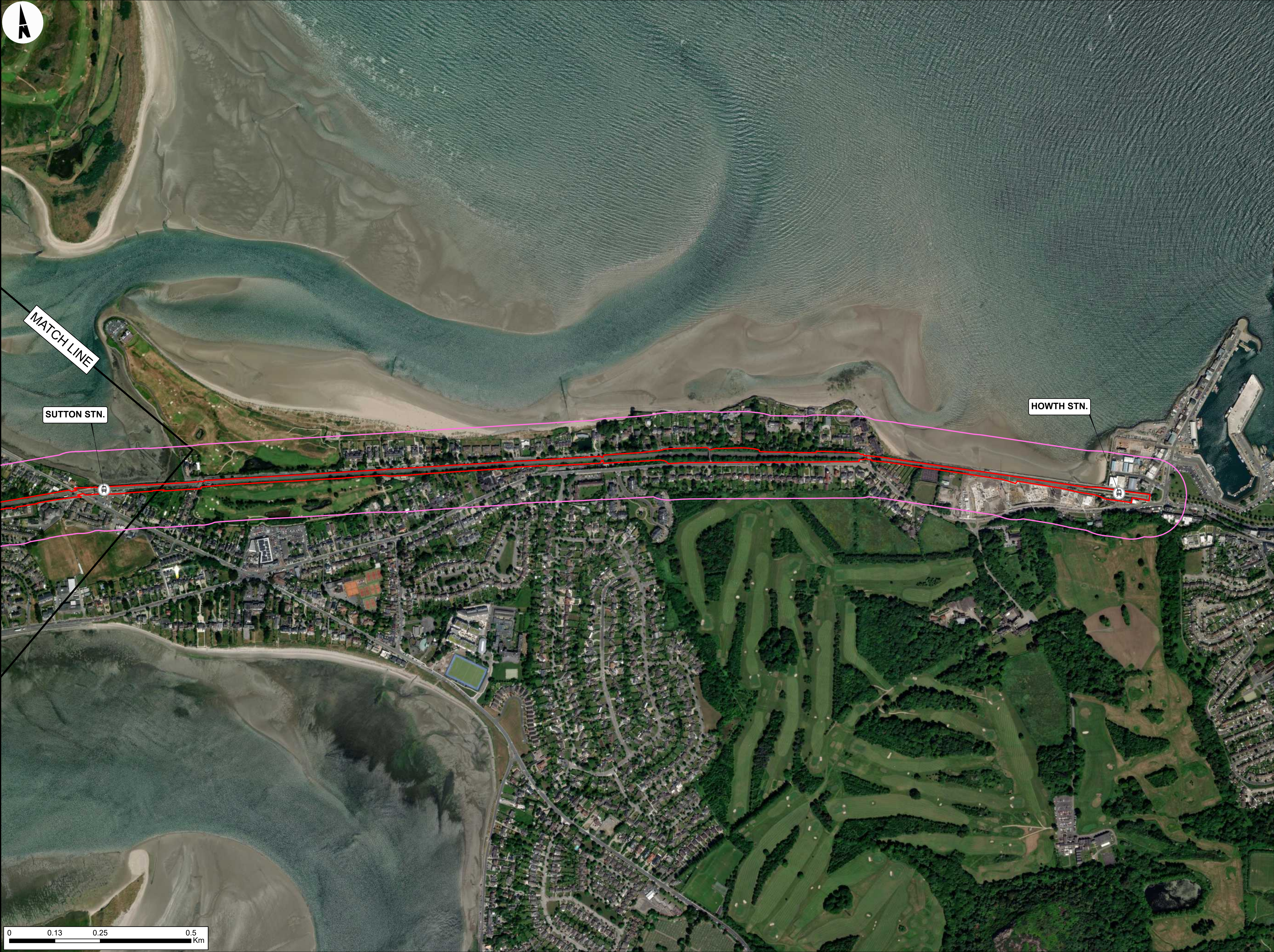
NOTES



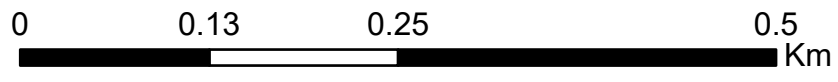
Rev	Date	Dm	Chk'd	App'd	Description
P02	31/05/2024	DM	TB	COD	PLANNING ISSUE

Client		Engineering Designer							
 Iarnród Éireann Irish Rail									
Date	05/10/2023	Scale	1:5000 @ A1 1:10000 @ A3	Drawn	DM	Checked	TB	Approved	COD
Project Code	D+WP56	Originator Code	ARP	QMS Code	279933-00				

Project Title				
DART+ COASTAL NORTH				
Drawing Title				
LANDSCAPE AND VISUAL AMENITY				
FIGURE 15.2: SIGNIFICANT EFFECTS ON RESIDENTIAL RECEPTORS				
Drawing File Name		Sheet Number	Status	Rev
D+WP56-ARP-ZZ-NL-DR-EVLA-100003		3 of 18	S4	P02



- LEGEND**
- RAILWAY STATIONS
 - DEVELOPMENT BOUNDARY
 - 100M BUFFER



Disclaimer
© Irish Rail (2023). This drawing is confidential and the copyright in it is owned by Irish Rail. This drawing must not be either loaned, copied or otherwise reproduced in whole or in part or used for any purpose without the prior permission of Irish Rail.

© Ordnance Survey Ireland and Government of Ireland. All O.S. data used for plans are printed under "Copyright Ordnance Survey Ireland 0039723 (OSI Aerial Data or OSI Lidar Data) & 2023/ OSI_NMA_180 (OSI Vector Data)". All elevations are in metres and relate to OSI Geoid Model (OSGM02) Malin Head as defined by existing Project Control. All Co-ordinates are in Irish Transverse Mercator Grid (ITM) as defined by OSI active GPS station Tallaght College (TLLG).

NOTES



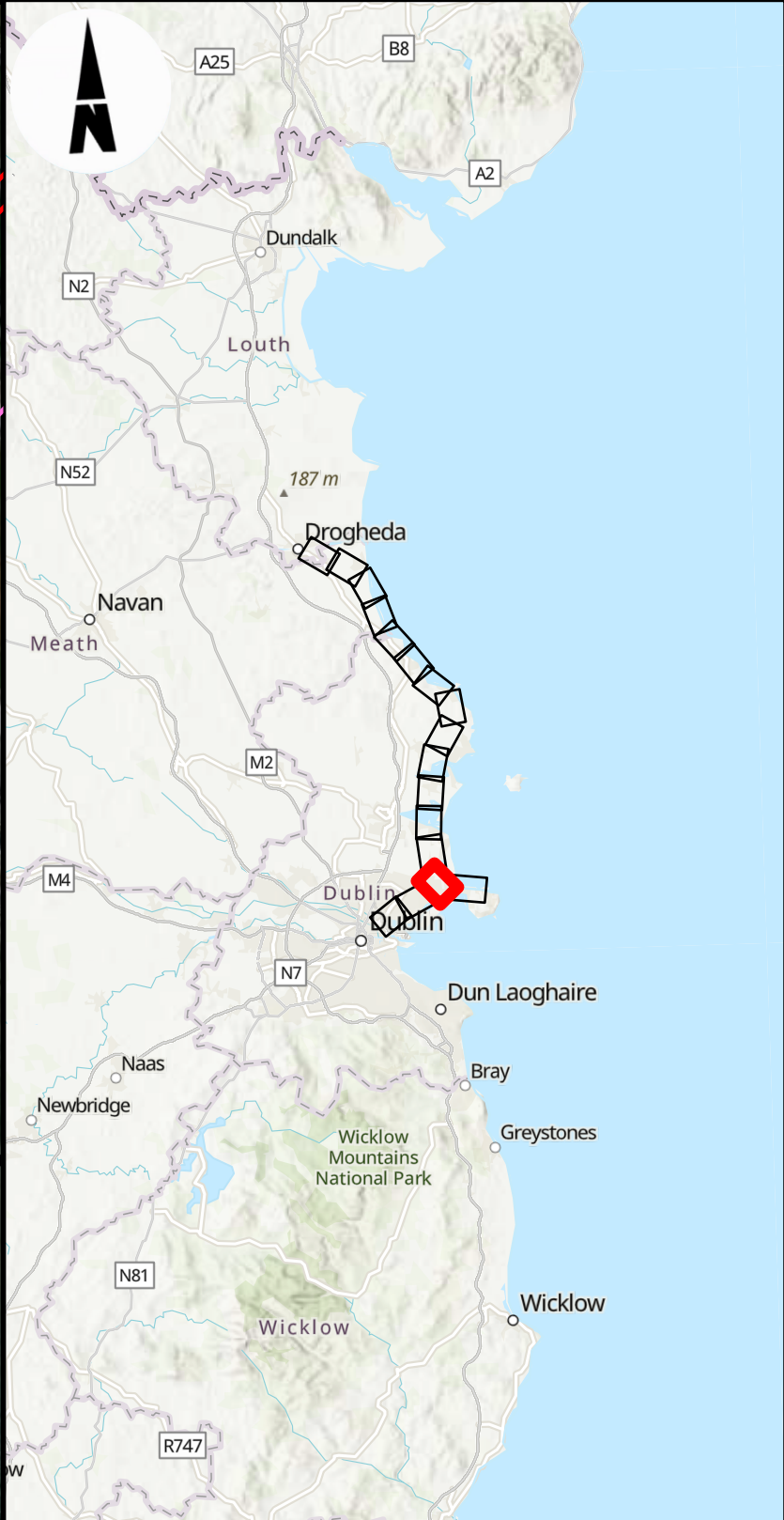
Tionscadal Éireann
Project Ireland
2040

Rev	Date	Dm	Chk'd	App'd	Description
P02	31/05/2024	DM	TB	COD	PLANNING ISSUE

Client	
Iarnród Éireann Irish Rail	
Date	Scale
05/10/2023	1:5000 @ A1 1:10000 @ A3
Project Code	Originator Code
D+WP56	ARP

Engineering Designer		
ARUP		
Drawn	Checked	Approved
DM	TB	COD
QMS Code		
279933-00		

Project Title			
DART+ COASTAL NORTH			
Drawing Title			
LANDSCAPE AND VISUAL AMENITY FIGURE 15.2: SIGNIFICANT EFFECTS ON RESIDENTIAL RECEPTORS			
Drawing File Name	Sheet Number	Status	Rev
D+WP56-ARP-ZZ-NL-DR-EVLA-100004	4 of 18	S4	P02



- LEGEND**
- RAILWAY STATIONS
 - DEVELOPMENT BOUNDARY
 - 100M BUFFER
 - RESIDENTIAL RECEPTORS
(MODERATE-SIGNIFICANT PRE-MITIGATION EFFECT)
 - RESIDENTIAL RECEPTOR GROUPS

Disclaimer
© Irish Rail (2023). This drawing is confidential and the copyright in it is owned by Irish Rail. This drawing must not be either loaned, copied or otherwise reproduced in whole or in part or used for any purpose without the prior permission of Irish Rail.

© OpenStreetMap contributors.

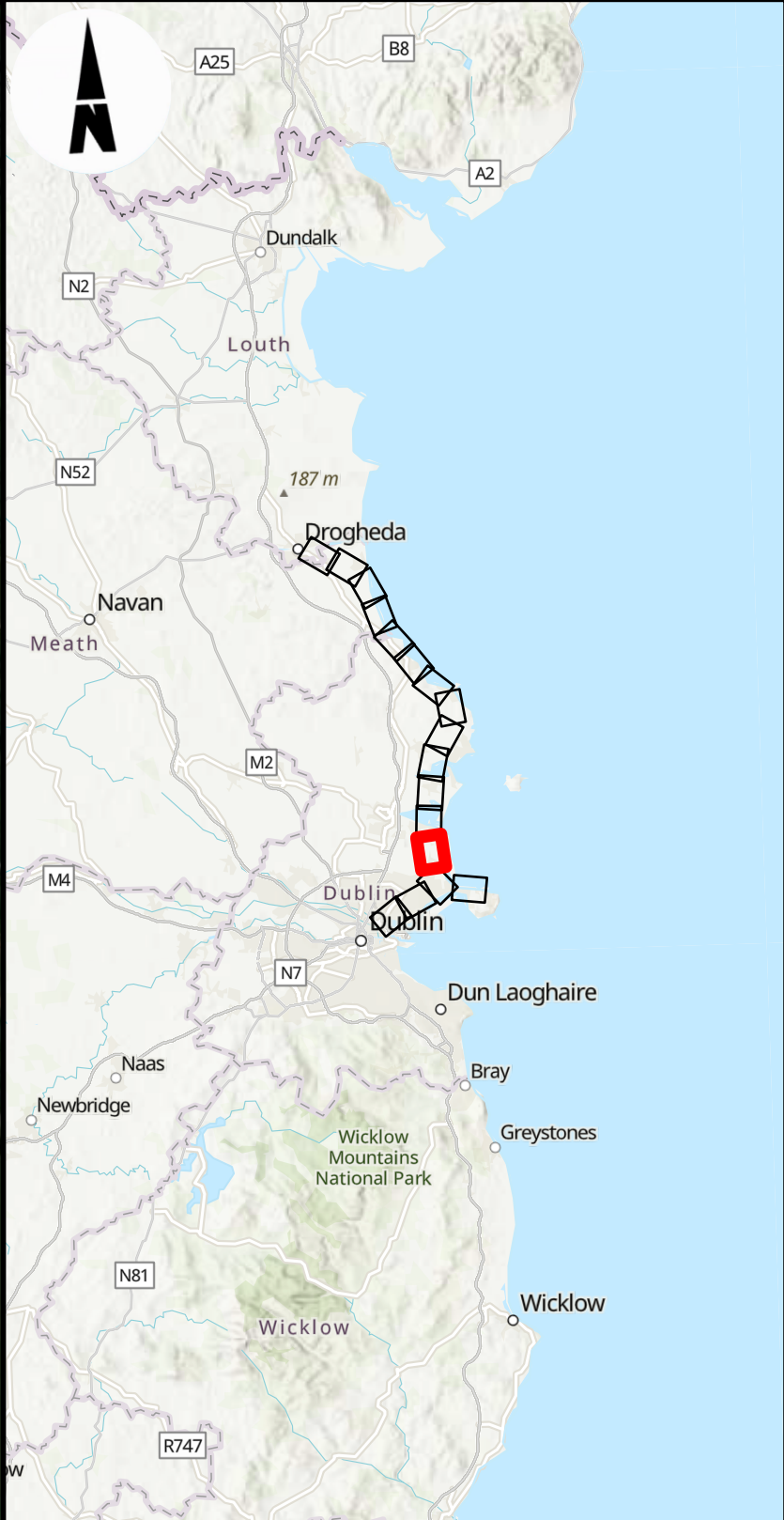
© Ordnance Survey Ireland and Government of Ireland. All O.S. data used for plans are printed under "Copyright Ordnance Survey Ireland 0039723 (OSI Aerial Data or OSI Lidar Data) & 2023/ OSI_NMA_180 (OSI Vector Data)". All elevations are in metres and relate to OSI Geoid Model (OSGM02) Malin Head as defined by existing Project Control. All Co-ordinates are in Irish Transverse Mercator Grid (ITM) as defined by OSI active GPS station Tallaght College (TLLG).

NOTES

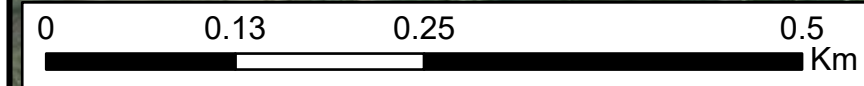
Rev	Date	Dm	Chk'd	App'd	Description
P02	31/05/2024	DM	TB	COD	PLANNING ISSUE

Client		Engineering Designer		
Date	Scale	Drawn	Checked	Approved
05/10/2023	1:5000 @ A1 1:10000 @ A3	DM	TB	COD
Project Code	Originator Code	GMS Code		
D+WP56	ARP	279933-00		

Project Title			
DART+ COASTAL NORTH			
Drawing Title			
LANDSCAPE AND VISUAL AMENITY FIGURE 15.2: SIGNIFICANT EFFECTS ON RESIDENTIAL RECEPTORS			
Drawing File Name	Sheet Number	Status	Rev
D+WP56-ARP-ZZ-NL-DR-EVLA-100005	6 of 18	S4	P02



- LEGEND**
- RAILWAY STATIONS
 - DEVELOPMENT BOUNDARY
 - 100M BUFFER



Disclaimer
© Irish Rail (2023). This drawing is confidential and the copyright in it is owned by Irish Rail. This drawing must not be either loaned, copied or otherwise reproduced in whole or in part or used for any purpose without the prior permission of Irish Rail.
© OpenStreetMap contributors.
© Ordnance Survey Ireland and Government of Ireland. All O.S. data used for plans are printed under "Copyright Ordnance Survey Ireland 0039723 (OSI Aerial Data or OSI Lidar Data) & 2023/ OSI_NMA_180 (OSI Vector Data)". All elevations are in metres and relate to OSI Geoid Model (OSGM02) Malin Head as defined by existing Project Control. All Co-ordinates are in Irish Transverse Mercator Grid (ITM) as defined by OSI active GPS station Tallaght College (TLLG).

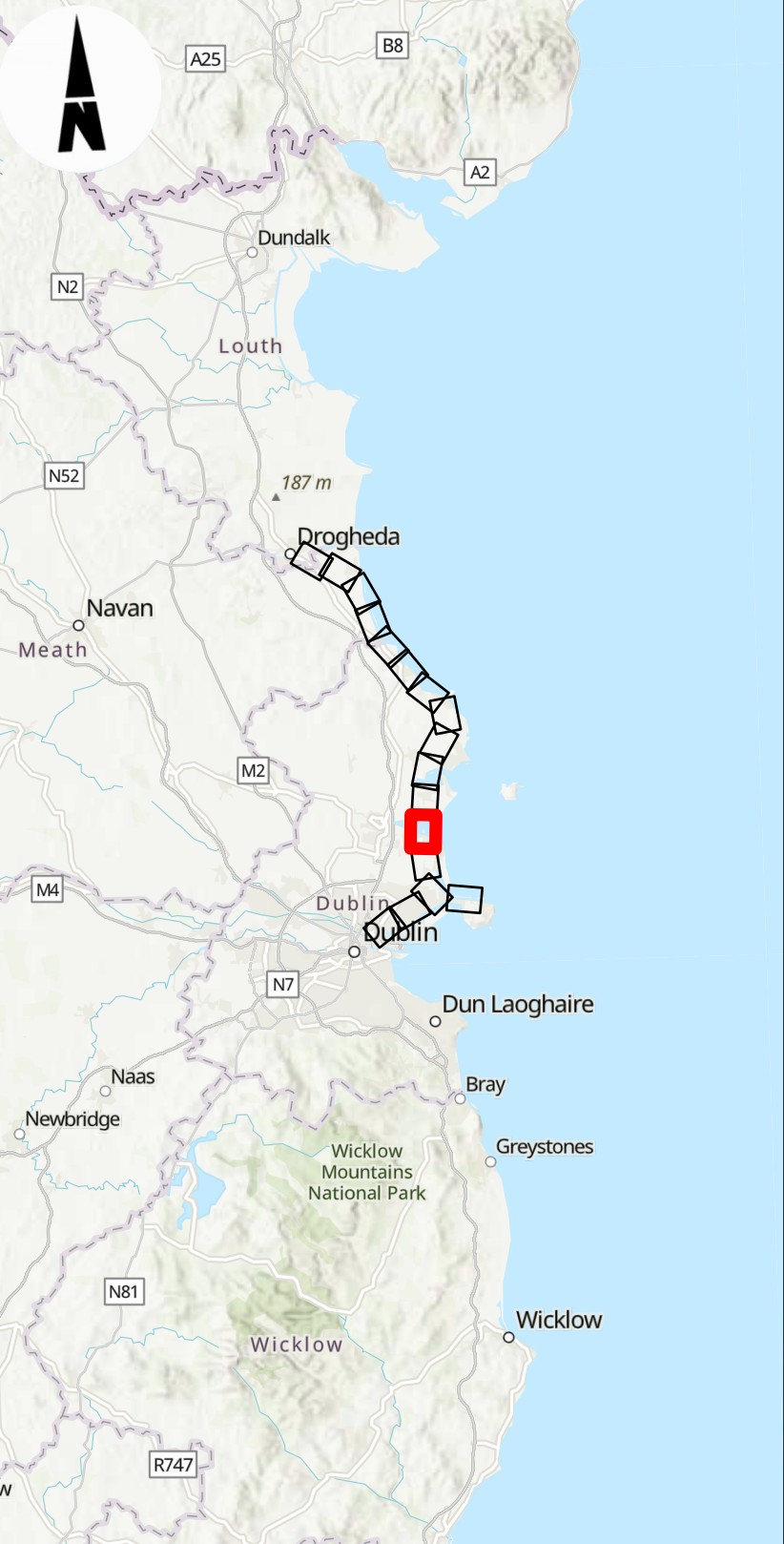
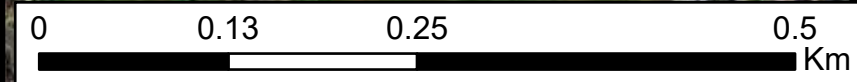
NOTES



Rev	Date	Dm	Chk'd	App'd	Description
P02	31/05/2024	DM	TB	COD	PLANNING ISSUE

Client larnród Éireann Irish Rail		Engineering Designer ARUP		
Date 05/10/2023	Scale 1:5000 @ A1 1:10000 @ A3	Drawn DM	Checked TB	Approved COD
Project Code D+WP56	Originator Code ARP	QMS Code 279933-00		

Project Title DART+ COASTAL NORTH				
Drawing Title LANDSCAPE AND VISUAL AMENITY FIGURE 15.2: SIGNIFICANT EFFECTS ON RESIDENTIAL RECEPTORS				
Drawing File Name D+WP56-ARP-ZZ-NL-DR-EVLA-100006	Sheet Number 6 of 18	Status S4	Rev P02	



- LEGEND**
- RAILWAY STATIONS
 - DEVELOPMENT BOUNDARY
 - 100M BUFFER
 - RESIDENTIAL RECEPTORS (MODERATE-SIGNIFICANT PRE-MITIGATION EFFECT)
 - RESIDENTIAL RECEPTOR GROUPS

Disclaimer
© Irish Rail (2023). This drawing is confidential and the copyright in it is owned by Irish Rail. This drawing must not be either loaned, copied or otherwise reproduced in whole or in part or used for any purpose without the prior permission of Irish Rail.
© OpenStreetMap contributors.
© Ordnance Survey Ireland and Government of Ireland. All O.S. data used for plans are printed under "Copyright Ordnance Survey Ireland 0038723 (OSI Aerial Data or OSI Lidar Data) & 2023/ OSI_NMA_180 (OSI Vector Data)". All elevations are in metres and relate to OSI Geoid Model (OSGM02) Malin Head as defined by existing Project Control. All Co-ordinates are in Irish Transverse Mercator Grid (ITM) as defined by OSI active GPS station Tallaght College (TLLG).

NOTES



Rev	Date	Dm	Chk'd	App'd	Description
P02	31/05/2024	DM	TB	COD	PLANNING ISSUE

Client
 Iarnród Éireann
Irish Rail

Date: 05/10/2023
Scale: 1:5000 @ A1
1:10000 @ A3

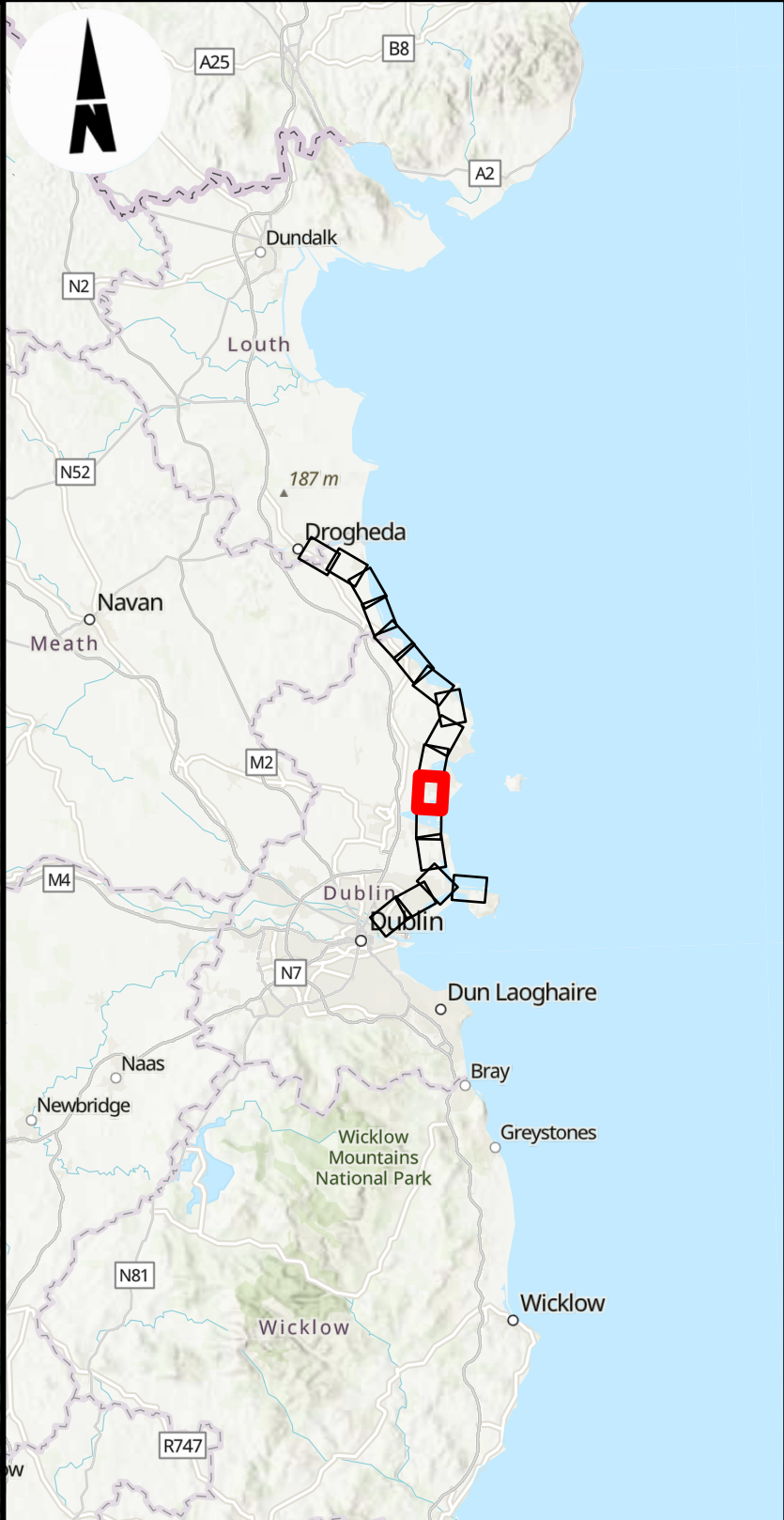
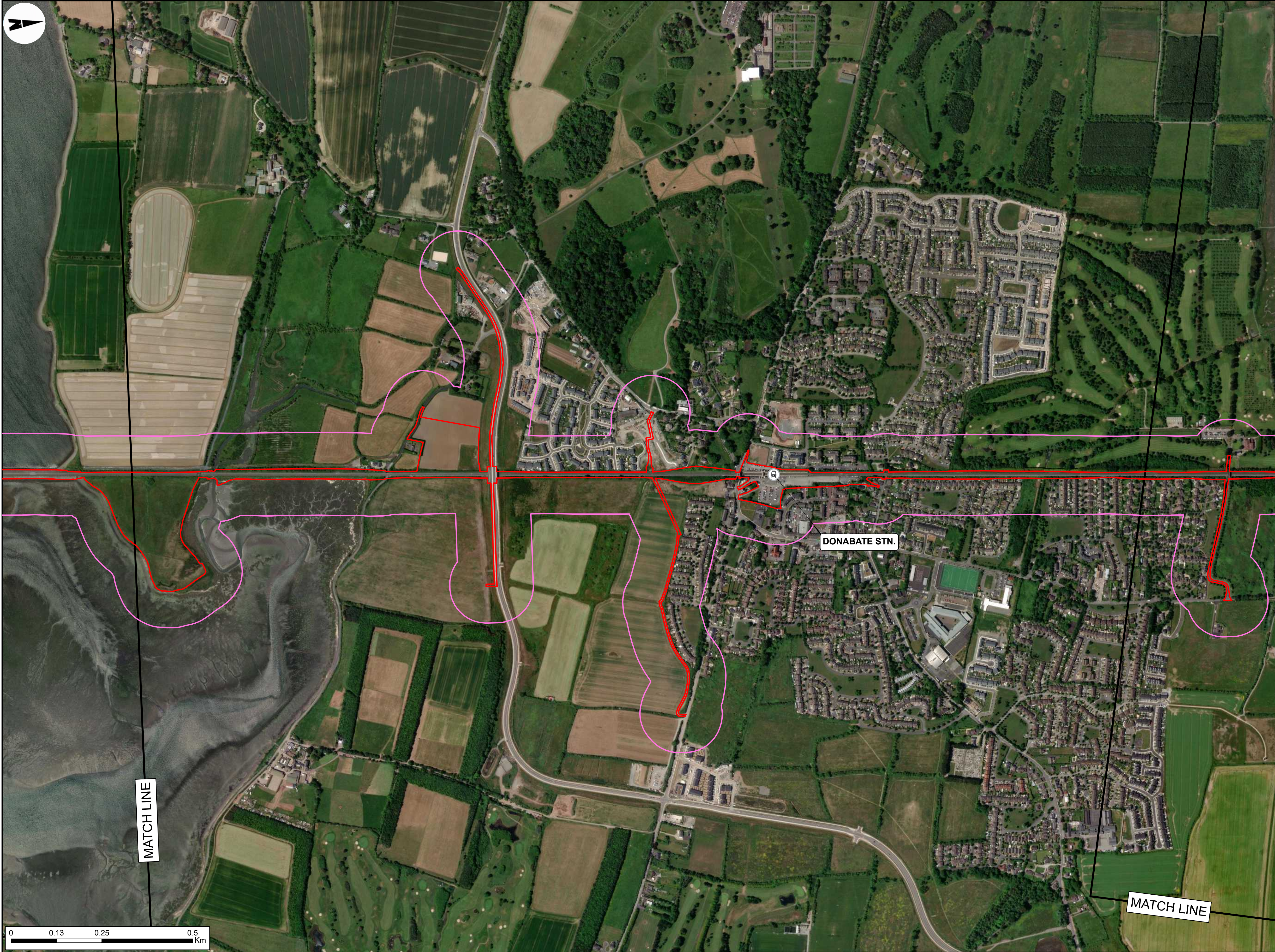
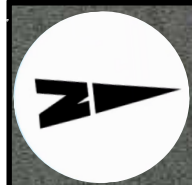
Project Code: D+WP56
Originator Code: ARP

Engineering Designer

Drawn	Checked	Approved
DM	TB	COD

QMS Code: 279933-00

Project Title DART+ COASTAL NORTH			
Drawing Title LANDSCAPE AND VISUAL AMENITY FIGURE 15.2: SIGNIFICANT EFFECTS ON RESIDENTIAL RECEPTORS			
Drawing File Name D+WP56-ARP-ZZ-NL-DR-EVLA-100007	Sheet Number 7 of 18	Status S4	Rev P02



- LEGEND**
- RAILWAY STATIONS
 - DEVELOPMENT BOUNDARY
 - 100M BUFFER

Disclaimer
© Irish Rail (2023). This drawing is confidential and the copyright in it is owned by Irish Rail. This drawing must not be either loaned, copied or otherwise reproduced in whole or in part or used for any purpose without the prior permission of Irish Rail.

© Ordnance Survey Ireland and Government of Ireland. All O.S. data used for plans are printed under "Copyright Ordnance Survey Ireland 0039723 (OSI Aerial Data or OSI Lidar Data) & 2023/ OSI_NMA_180 (OSI Vector Data)". All elevations are in metres and relate to OSI Geoid Model (OSGM02) Malin Head as defined by existing Project Control. All Co-ordinates are in Irish Transverse Mercator Gnd (ITM) as defined by OSI active GPS station Tallaght College (TLLG).

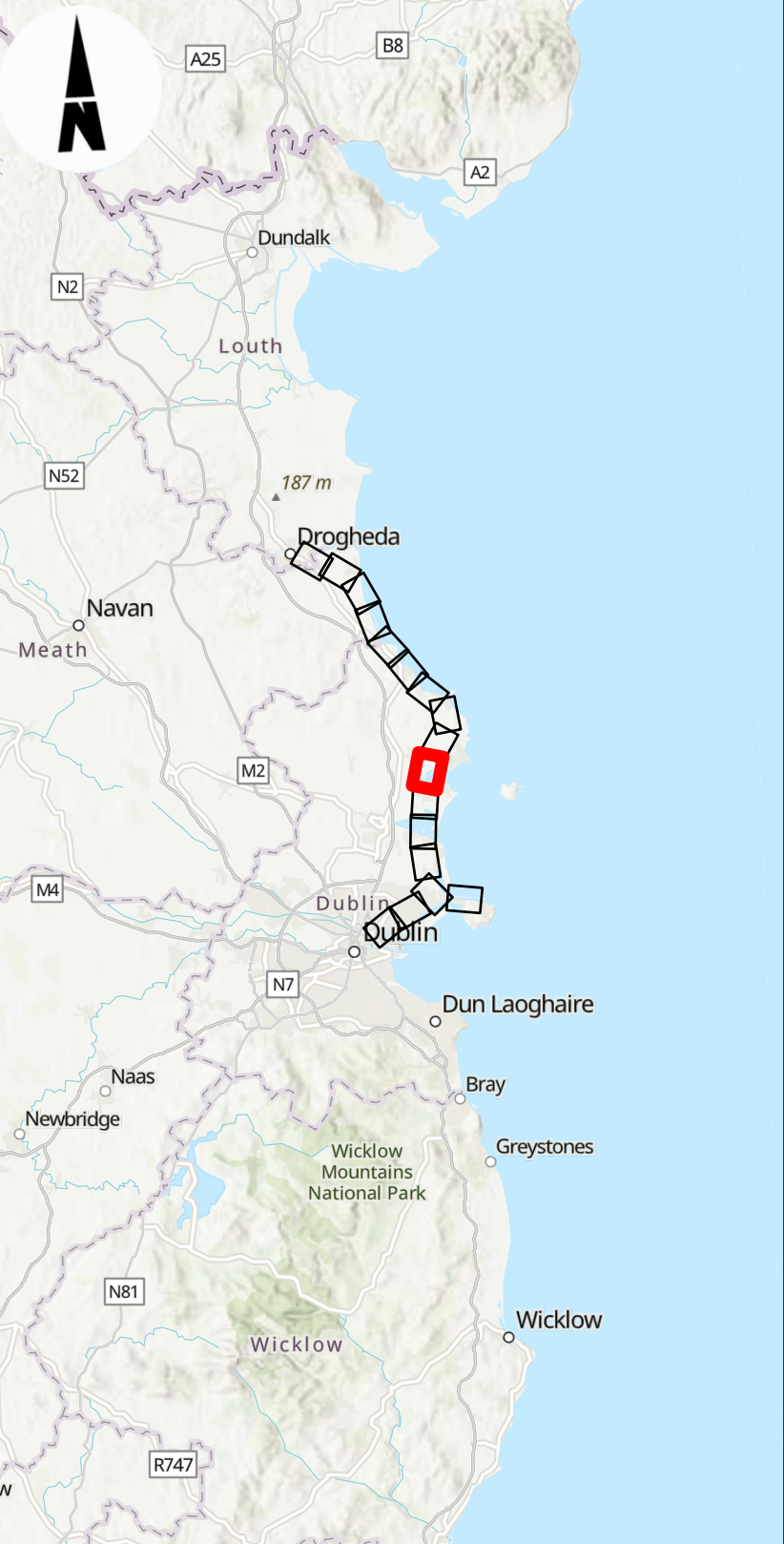
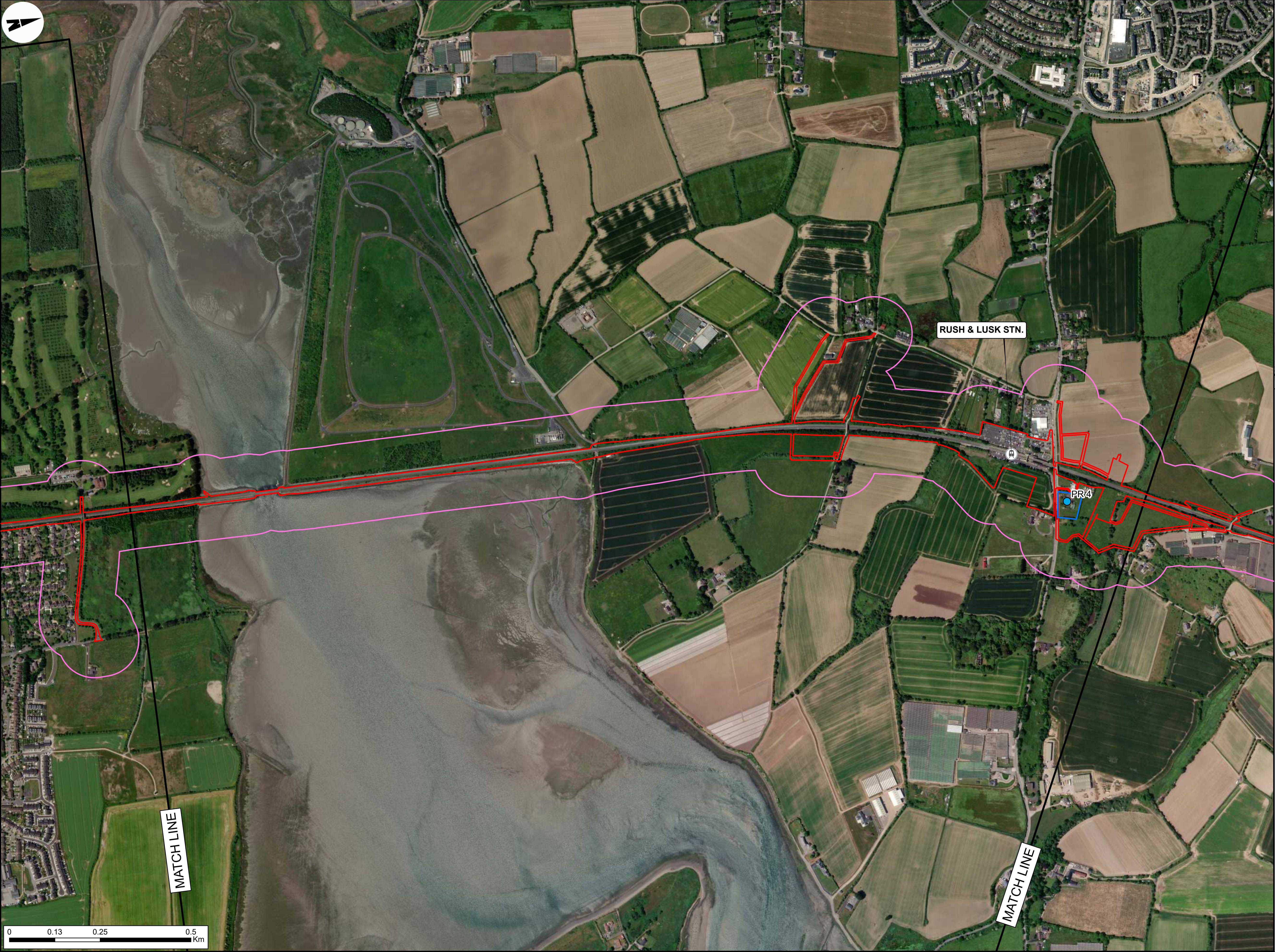
© OpenStreetMap contributors.

NOTES



Rev	Date	Dm	Chk'd	App'd	Description
P02	31/05/2024	DM	TB	COD	PLANNING ISSUE

Client		Engineering Designer		Project Title	
Iarnród Éireann Irish Rail		ARUP		DART+ COASTAL NORTH	
Date		Scale		Drawing Title	
05/10/2023		1:5000 @ A1 1:10000 @ A3		LANDSCAPE AND VISUAL AMENITY FIGURE 15.2: SIGNIFICANT EFFECTS ON RESIDENTIAL RECEPTORS	
Project Code		Originator Code		Drawing File Name	
D+WP56		ARP		D+WP56-ARP-ZZ-NL-DR-EVLA-100008	
QMS Code		Sheet Number		Status	
279933-00		8 of 18		S4	
				Rev	
				P02	



- LEGEND**
- RAILWAY STATIONS
 - DEVELOPMENT BOUNDARY
 - 100M BUFFER
 - RESIDENTIAL RECEPTORS (MODERATE-SIGNIFICANT PRE-MITIGATION EFFECT)
 - RESIDENTIAL RECEPTOR GROUPS

Disclaimer
© Irish Rail (2023). This drawing is confidential and the copyright in it is owned by Irish Rail. This drawing must not be either loaned, copied or otherwise reproduced in whole or in part or used for any purpose without the prior permission of Irish Rail.
© OpenStreetMap contributors.
© Ordnance Survey Ireland and Government of Ireland. All O.S. data used for plans are printed under "Copyright Ordnance Survey Ireland 0038723 (OSI Aerial Data or OSI Lidar Data) & 2023/ OSI_NMA_180 (OSI Vector Data)". All elevations are in metres and relate to OSI Geoid Model (OSGM02) Malin Head as defined by existing Project Control. All Co-ordinates are in Irish Transverse Mercator Grd (ITM) as defined by OSI active GPS station Tallaght College (TLLG).

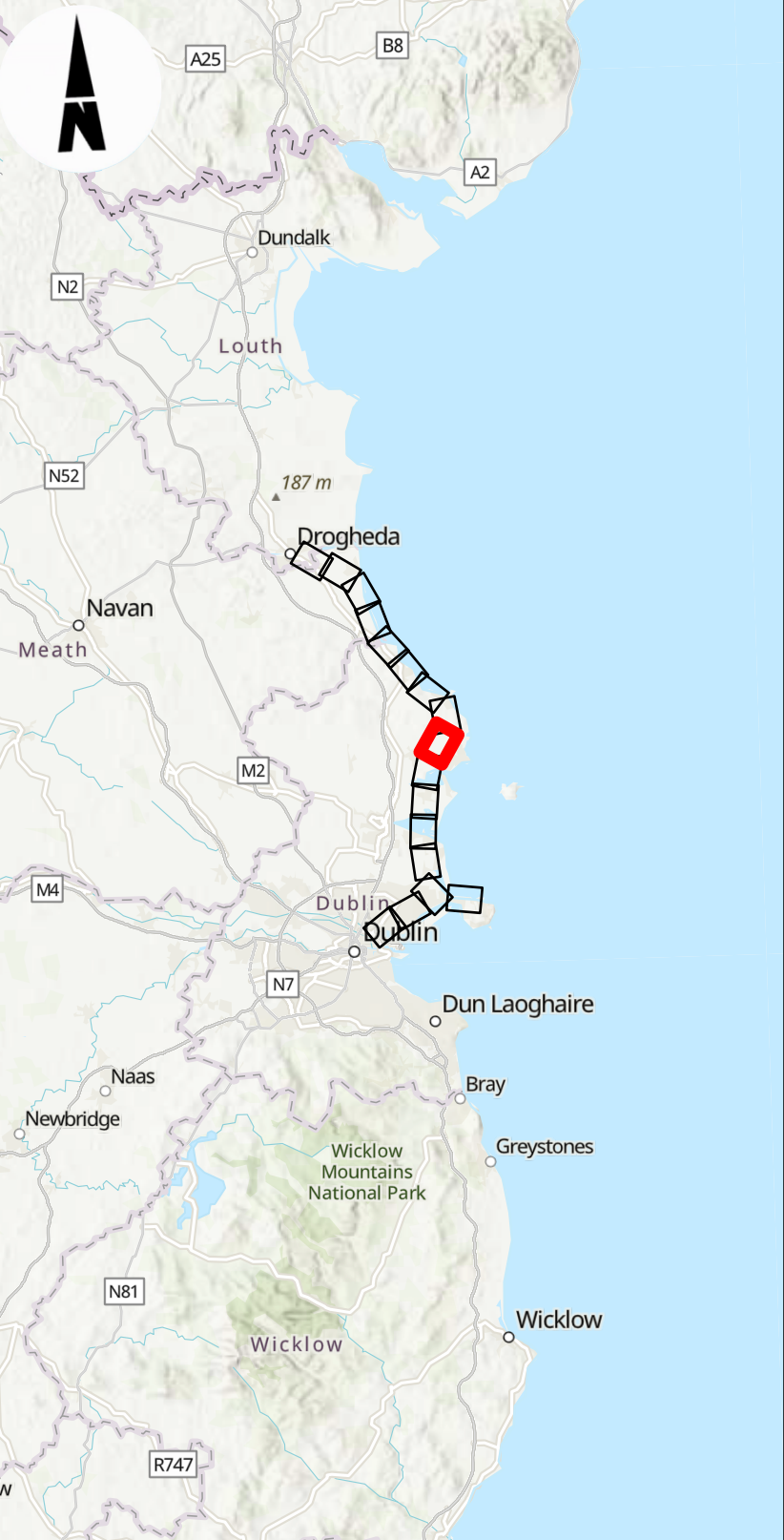
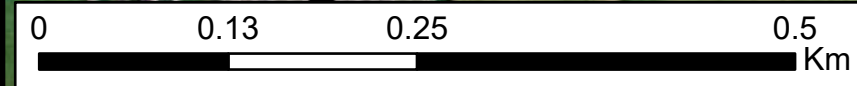
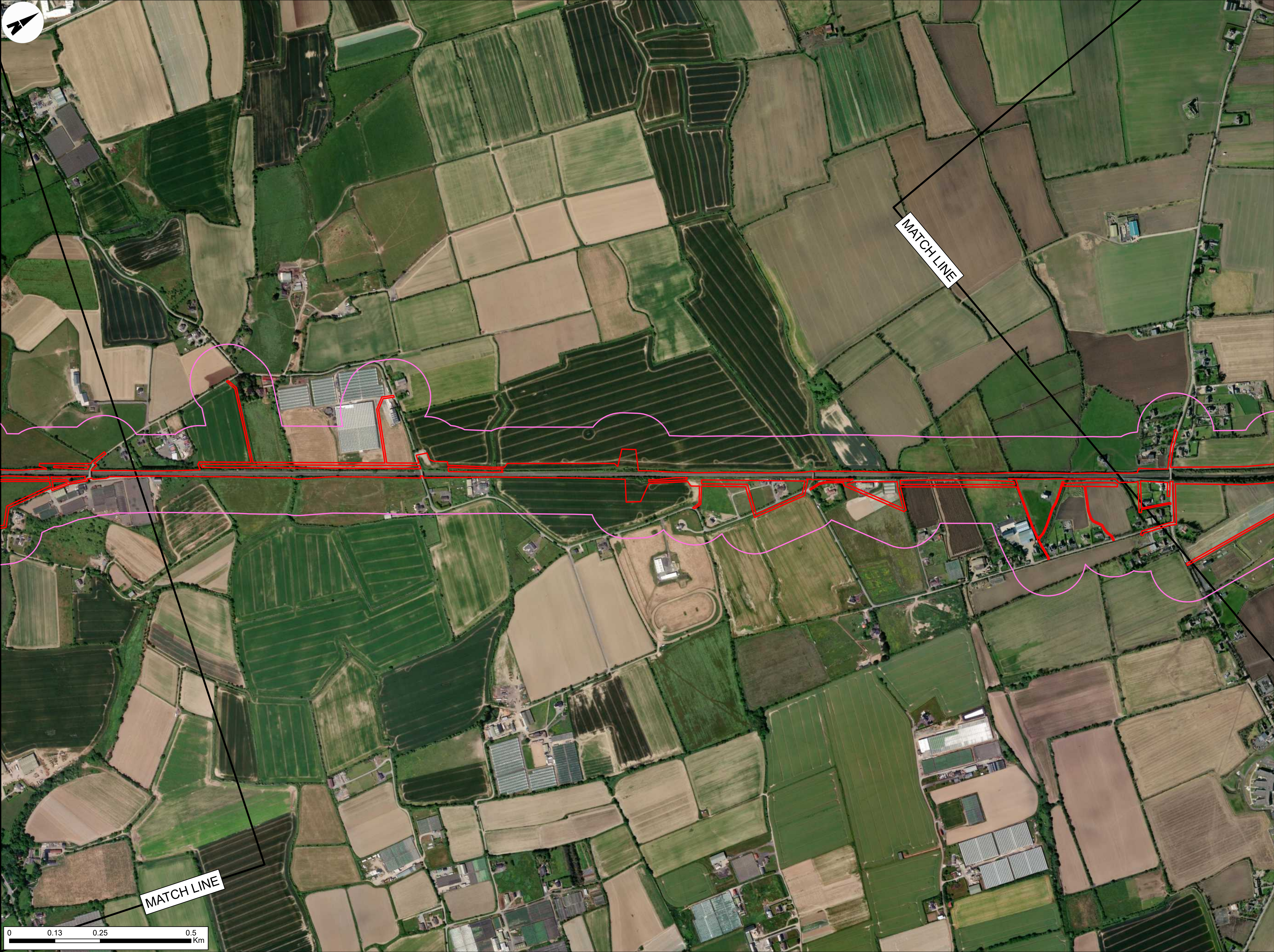
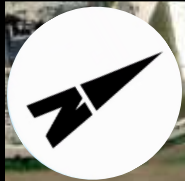
NOTES



Rev	Date	Dm	Chk'd	App'd	Description
P02	31/05/2024	DM	TB	COD	PLANNING ISSUE

Client		Engineering Designer	
Date	05/10/2023	Scale	1:5000 @ A1 1:10000 @ A3
Project Code	D+WP56	Originator Code	ARP
Drawn		Checked	Approved
DM		TB	COD
Project Code		QMS Code	
D+WP56		279933-00	

Project Title			
DART+ COASTAL NORTH			
Drawing Title			
LANDSCAPE AND VISUAL AMENITY FIGURE 15.2: SIGNIFICANT EFFECTS ON RESIDENTIAL RECEPTORS			
Drawing File Name		Sheet Number	Status
D+WP56-ARP-ZZ-LL-DR-EVLA-100009		9 of 18	S4
Rev		P02	



- LEGEND**
- DEVELOPMENT BOUNDARY
 - 100M BUFFER

Disclaimer
© Irish Rail (2023). This drawing is confidential and the copyright in it is owned by Irish Rail. This drawing must not be either loaned, copied or otherwise reproduced in whole or in part or used for any purpose without the prior permission of Irish Rail.

© OpenStreetMap contributors.

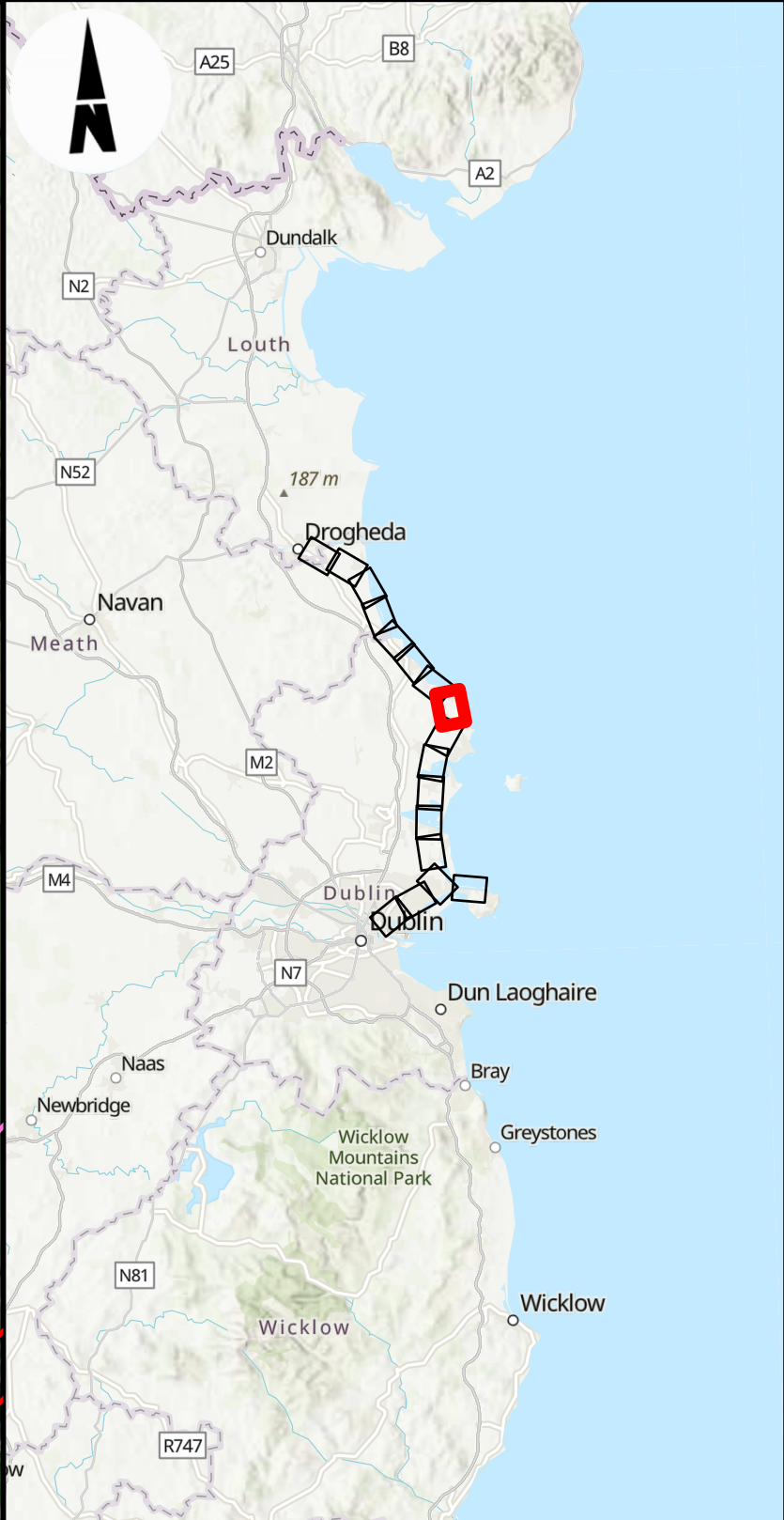
© Ordnance Survey Ireland and Government of Ireland. All O.S. data used for plans are printed under "Copyright Ordnance Survey Ireland 0039723 (OSI Aerial Data or OSI Lidar Data) & 2023/ OSI_NMA_180 (OSI Vector Data)". All elevations are in metres and relate to OSI Geoid Model (OSGM02) Malin Head as defined by existing Project Control. All Co-ordinates are in Irish Transverse Mercator Grid (ITM) as defined by OSI active GPS station Tallaght College (TLLG).

NOTES

Rev	Date	Dm	Chk'd	App'd	Description
P02	31/05/2024	DM	TB	COD	PLANNING ISSUE

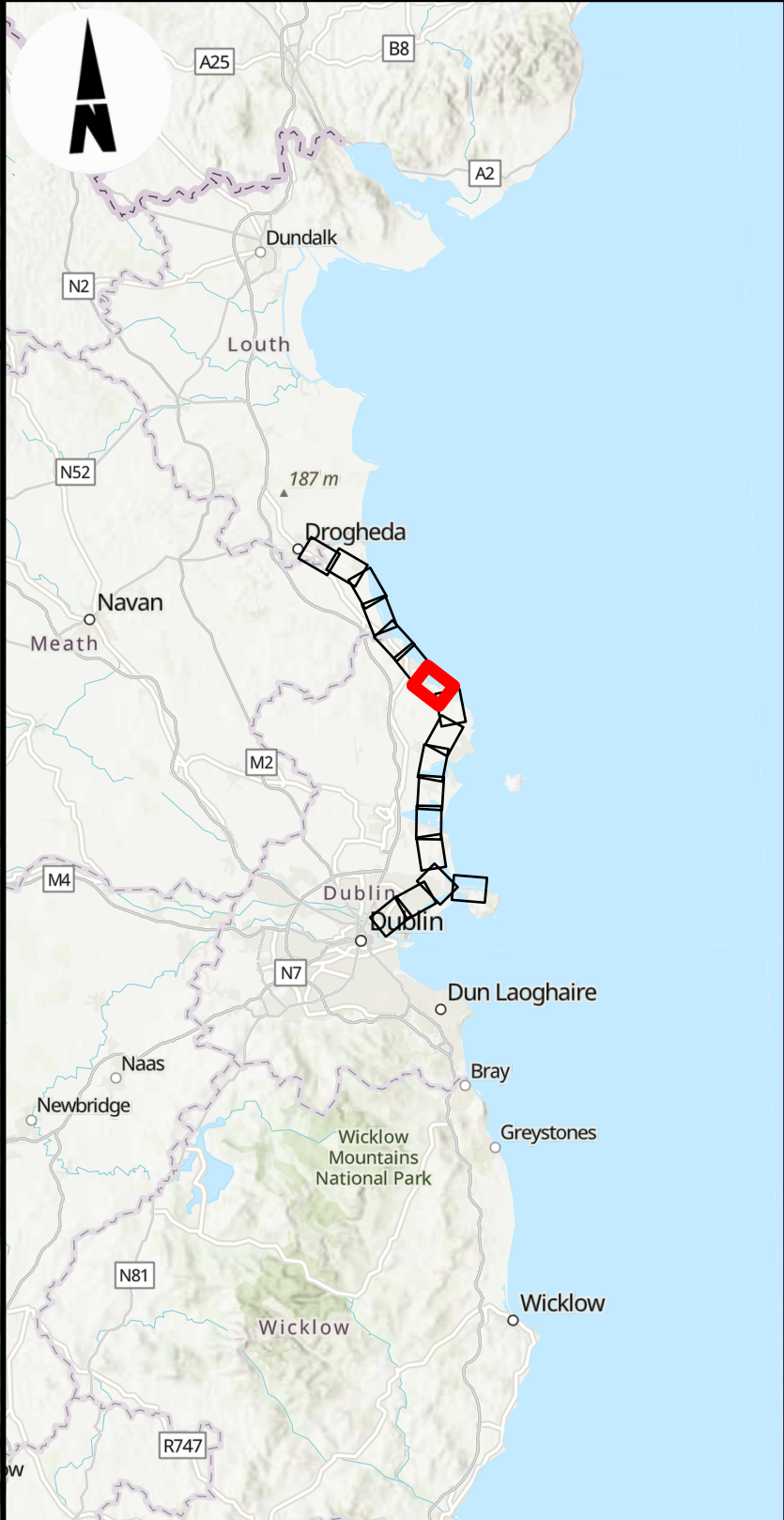
Date	05/10/2023	Scale	1:5000 @ A1 1:10000 @ A3	Drawn	DM	Checked	TB	Approved	COD
Project Code	D+WP56	Originator Code	ARP	QMS Code	279933-00				

Project Title			
DART+ COASTAL NORTH			
Drawing Title			
LANDSCAPE AND VISUAL AMENITY FIGURE 15.2: SIGNIFICANT EFFECTS ON RESIDENTIAL RECEPTORS			
Drawing File Name		Sheet Number	Status
D+WP56-ARP-ZZ-NL-DR-EVLA-100010		10 of 18	S4
Rev			
P02			

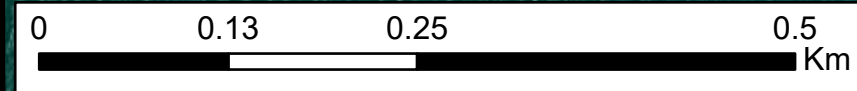


- LEGEND**
- RAILWAY STATIONS
 - DEVELOPMENT BOUNDARY
 - 100M BUFFER
 - RESIDENTIAL RECEPTORS (MODERATE-SIGNIFICANT PRE-MITIGATION EFFECT)
 - RESIDENTIAL RECEPTOR GROUPS

<div>Disclaimer</div> <div>© Irish Rail (2023). This drawing is confidential and the copyright in it is owned by Irish Rail. This drawing must not be either loaned, copied or otherwise reproduced in whole or in part or used for any purpose without the prior permission of Irish Rail.</div> <div>© OpenStreetMap contributors.</div> <div>© Ordnance Survey Ireland and Government of Ireland. All O.S. data used for plans are printed under "Copyright Ordnance Survey Ireland 0039723 (OSI Aerial Data or OSI Lidar Data) & 2023/ OSI_NMA_180 (OSI Vector Data)". All elevations are in metres and relate to OSI Geoid Model (OSGM02) Malin Head as defined by existing Project Control. All Co-ordinates are in Irish Transverse Mercator Grid (ITM) as defined by OSI active GPS station Tallaght College (TLLG).</div>										<div>NOTES</div>										<div><div><div><div><div><div></div><div></div><div></div></div><div></div></div><div>DART+ Coastal North</div></div><div><div><div><div><div></div><div></div><div></div></div><div></div></div><div>NTA</div><div>Udarás Náisiúnta Iompair</div><div>National Transport Authority</div></div><div><div><div></div><div></div><div></div></div><div></div></div><div>Tionscadal Éireann</div><div>Project Ireland</div><div>2040</div></div></div></div>										<table><tr><th>Rev</th><th>Date</th><th>Dm</th><th>Chk'd</th><th>App'd</th><th>Description</th></tr><tr><td>P02</td><td>31/05/2024</td><td>DM</td><td>TB</td><td>COD</td><td>PLANNING ISSUE</td></tr><tr><td></td><td></td><td></td><td></td><td></td><td></td></tr><tr><td></td><td></td><td></td><td></td><td></td><td></td></tr><tr><td></td><td></td><td></td><td></td><td></td><td></td></tr><tr><td></td><td></td><td></td><td></td><td></td><td></td></tr></table>										Rev	Date	Dm	Chk'd	App'd	Description	P02	31/05/2024	DM	TB	COD	PLANNING ISSUE																									<div>Client</div> <div><div><div><div></div><div></div><div></div></div><div></div></div><div>Iarnród Éireann</div><div>Irish Rail</div></div> <div>Date</div> <div>05/10/2023</div> <div>Scale</div> <div>1:5000 @ A1</div> <div>1:10000 @ A3</div> <div>Project Code</div> <div>D+WP56</div> <div>Originator Code</div> <div>ARP</div>										<div>Engineering Designer</div> <div><div><div><div></div><div></div><div></div></div><div></div></div><div>ARUP</div></div> <div>Drawn</div> <div>DM</div> <div>Checked</div> <div>TB</div> <div>Approved</div> <div>COD</div> <div>QMS Code</div> <div>279933-00</div>										<div>Project Title</div> <div>DART+ COASTAL NORTH</div> <div>Drawing Title</div> <div>LANDSCAPE AND VISUAL AMENITY</div> <div>FIGURE 15.2: SIGNIFICANT EFFECTS ON RESIDENTIAL RECEPTORS</div> <div>Drawing File Name</div> <div>D+WP56-ARP-ZZ-NL-DR-EVLA-100011</div> <div>Sheet Number</div> <div>11 of 18</div> <div>Status</div> <div>S4</div> <div>Rev</div> <div>P02</div>									
Rev	Date	Dm	Chk'd	App'd	Description																																																																																																				
P02	31/05/2024	DM	TB	COD	PLANNING ISSUE																																																																																																				



- LEGEND**
- DEVELOPMENT BOUNDARY
 - 100M BUFFER
 - RESIDENTIAL RECEPTORS
(MODERATE-SIGNIFICANT
PRE-MITIGATION EFFECT)
 - RESIDENTIAL RECEPTOR
GROUPS



Disclaimer
© Irish Rail (2023). This drawing is confidential and the copyright in it is owned by Irish Rail. This drawing must not be either loaned, copied or otherwise reproduced in whole or in part or used for any purpose without the prior permission of Irish Rail.
© OpenStreetMap contributors.
© Ordnance Survey Ireland and Government of Ireland. All O.S. data used for plans are printed under "Copyright Ordnance Survey Ireland 0038723 (OSI Aerial Data or OSI Lidar Data) & 2023/ OSI_NMA_180 (OSI Vector Data)". All elevations are in metres and relate to OSI Geoid Model (OSGM02) Malin Head as defined by existing Project Control. All Co-ordinates are in Irish Transverse Mercator Grid (ITM) as defined by OSI active GPS station Tallaght College (TLLG).

NOTES

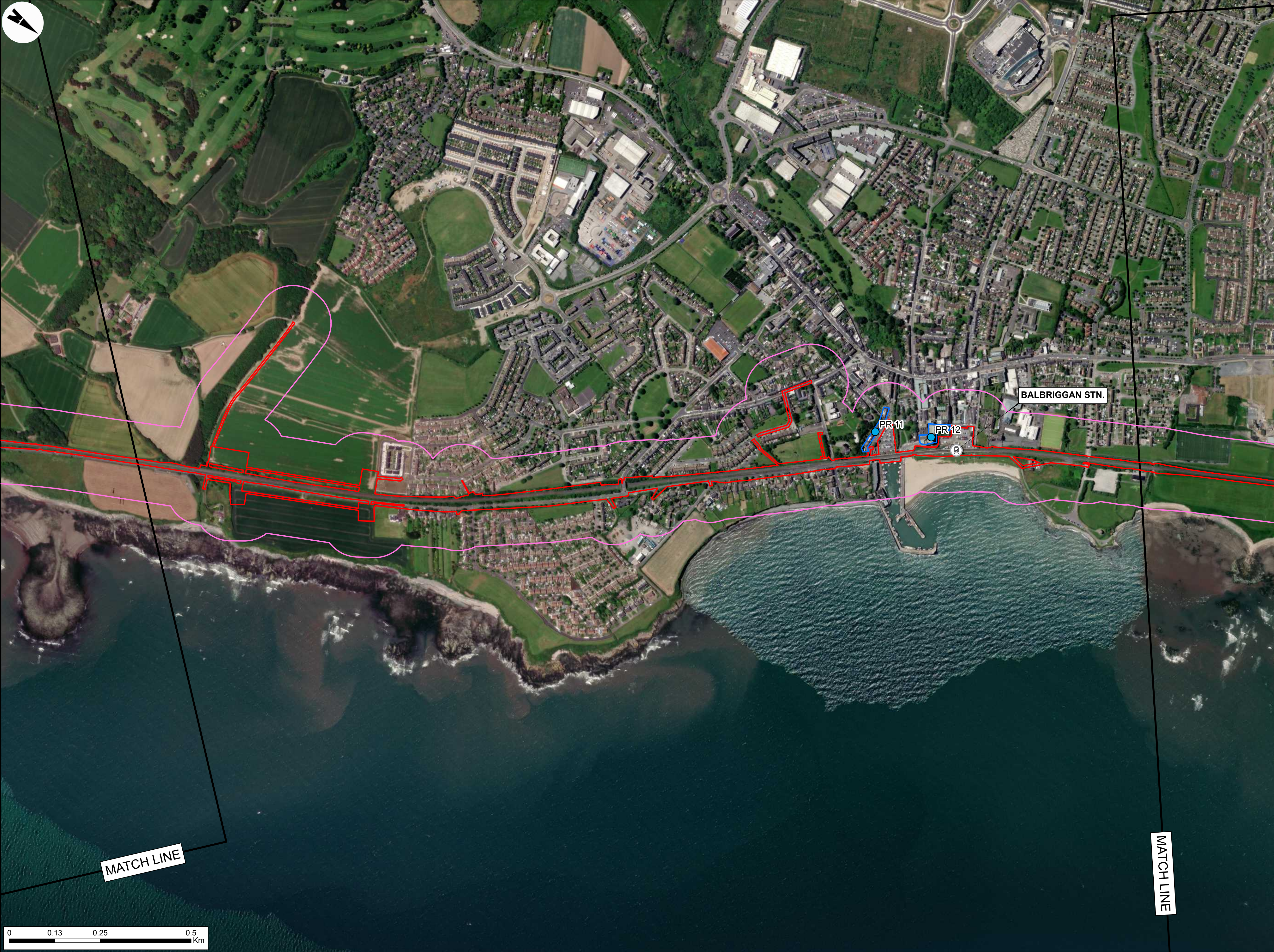


Rev	Date	Dm	Chk'd	App'd	Description
P02	31/05/2024	DM	TB	COD	PLANNING ISSUE

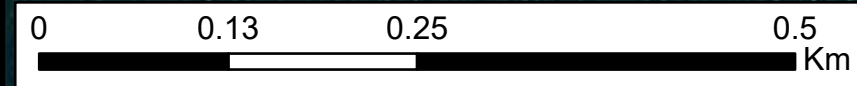
Client	
Iarnród Éireann Irish Rail	
Date	05/10/2023
Scale	1:5000 @ A1 1:10000 @ A3
Project Code	D+WP56
Originator Code	ARP

Engineering Designer		
ARUP		
Drawn	Checked	Approved
DM	TB	COD
QMS Code		
279933-00		

Project Title			
DART+ COASTAL NORTH			
Drawing Title			
LANDSCAPE AND VISUAL AMENITY FIGURE 15.2: SIGNIFICANT EFFECTS ON RESIDENTIAL RECEPTORS			
Drawing File Name	Sheet Number	Status	Rev
D+WP56-ARP-ZZ-NL-DR-EVLA-100012	12 of 18	S4	P02



- LEGEND**
- RAILWAY STATIONS
 - DEVELOPMENT BOUNDARY
 - 100M BUFFER
 - RESIDENTIAL RECEPTORS (MODERATE-SIGNIFICANT PRE-MITIGATION EFFECT)
 - RESIDENTIAL RECEPTOR GROUPS





Disclaimer
© Irish Rail (2023). This drawing is confidential and the copyright in it is owned by Irish Rail. This drawing must not be either loaned, copied or otherwise reproduced in whole or in part or used for any purpose without the prior permission of Irish Rail.

© Ordnance Survey Ireland and Government of Ireland. All O.S. data used for plans are printed under "Copyright Ordnance Survey Ireland 0038723 (OSI Aerial Data or OSI Lidar Data) & 2023/ OSI_NMA_180 (OSI Vector Data)". All elevations are in metres and relate to OSI Geoid Model (OSGM02) Malin Head as defined by existing Project Control. All Co-ordinates are in Irish Transverse Mercator Grid (ITM) as defined by OSI active GPS station Tallaght College (TLLG).

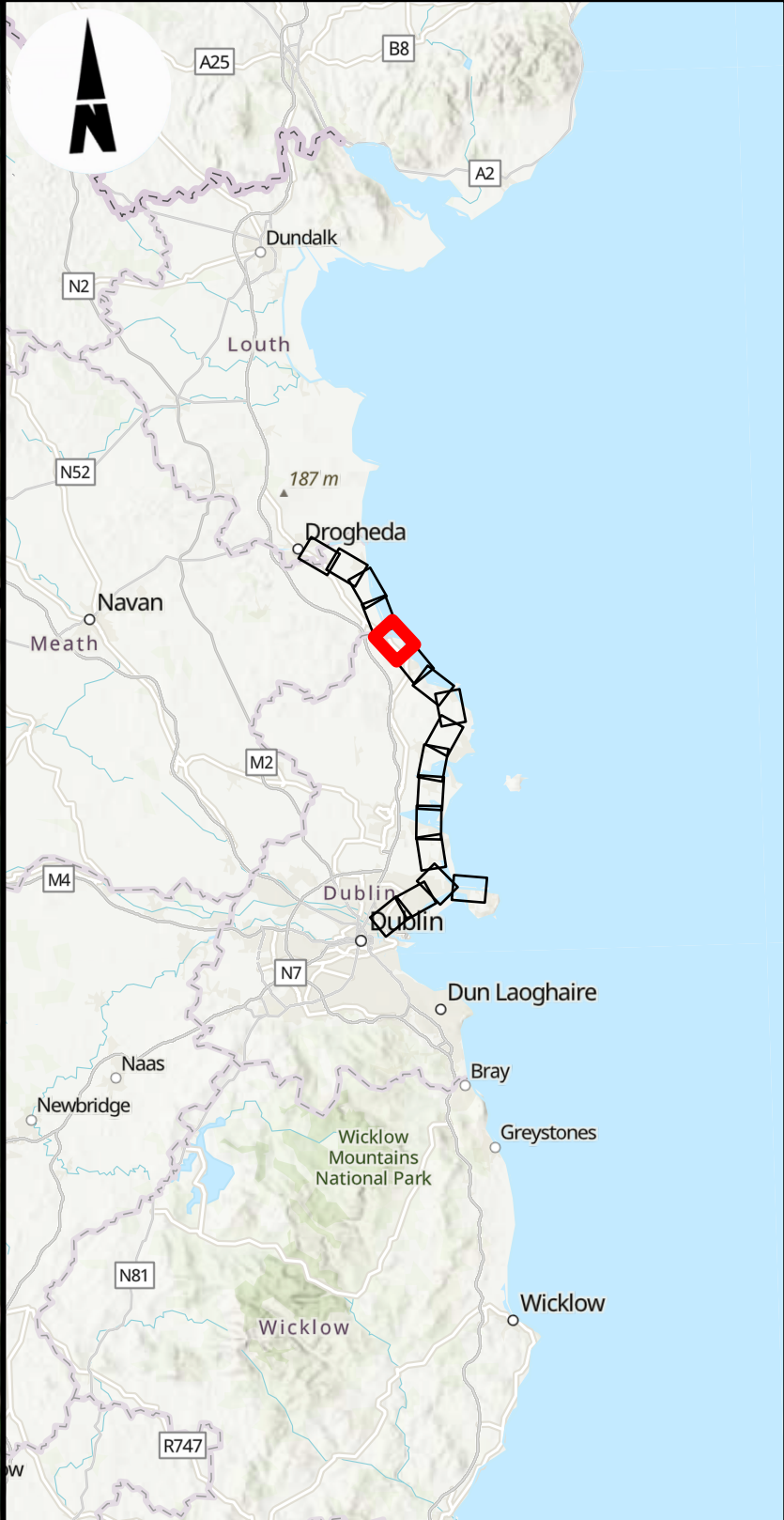
NOTES



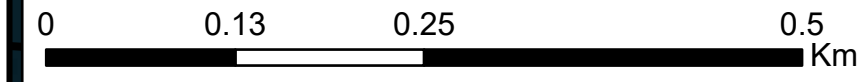
Rev	Date	Dm	Chk'd	App'd	Description
P02	31/05/2024	DM	TB	COD	PLANNING ISSUE

ient		Engineering Designer							
									
Date	05/10/2023	Scale	1:5000 @ A1 1:10000 @ A3	Drawn	DM	Checked	TB	Approved	COD
Project Code	D+WP56	Originator Code	ARP	QMS Code		279933-00			

Project Title				DART+ COASTAL NORTH			
Drawing Title				LANDSCAPE AND VISUAL AMENITY FIGURE 15.2: SIGNIFICANT EFFECTS ON RESIDENTIAL RECEPTORS			
Drawing File Name		Sheet Number	Status	Rev			
D+WP56-ARP-ZZ-NL-DR-EVLA-100013		13 of 18	S4	P02			



- LEGEND**
- RAILWAY STATIONS
 - DEVELOPMENT BOUNDARY
 - 100M BUFFER
 - RESIDENTIAL RECEPTORS (MODERATE-SIGNIFICANT PRE-MITIGATION EFFECT)
 - RESIDENTIAL RECEPTOR GROUPS



Disclaimer
© Irish Rail (2023). This drawing is confidential and the copyright in it is owned by Irish Rail. This drawing must not be either loaned, copied or otherwise reproduced in whole or in part or used for any purpose without the prior permission of Irish Rail.

© Ordnance Survey Ireland and Government of Ireland. All O.S. data used for plans are printed under "Copyright Ordnance Survey Ireland 0038723 (OSI Aerial Data or OSI Lidar Data) & 2023/ OSI_NMA_180 (OSI Vector Data)". All elevations are in metres and relate to OSI Geoid Model (OSGM02) Malin Head as defined by existing Project Control. All Co-ordinates are in Irish Transverse Mercator Grid (ITM) as defined by OSI active GPS station Tallaght College (TLLG).

© OpenStreetMap contributors.

NOTES

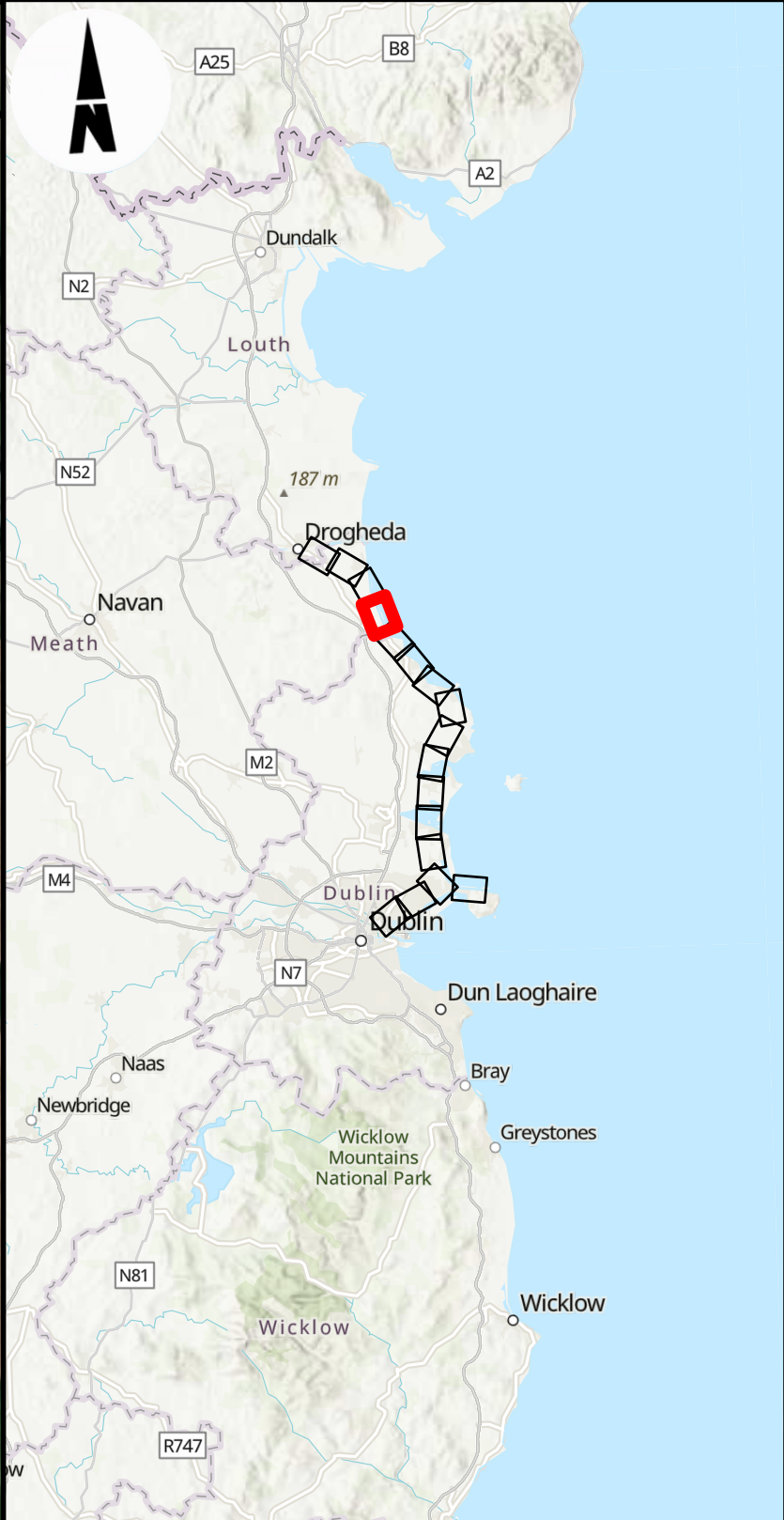


Rev	Date	Dm	Chk'd	App'd	Description
P02	31/05/2024	DM	TB	COD	PLANNING ISSUE

Date	05/10/2023
Scale	1:5000 @ A1 1:10000 @ A3
Project Code	D+WP56
Originator Code	ARP

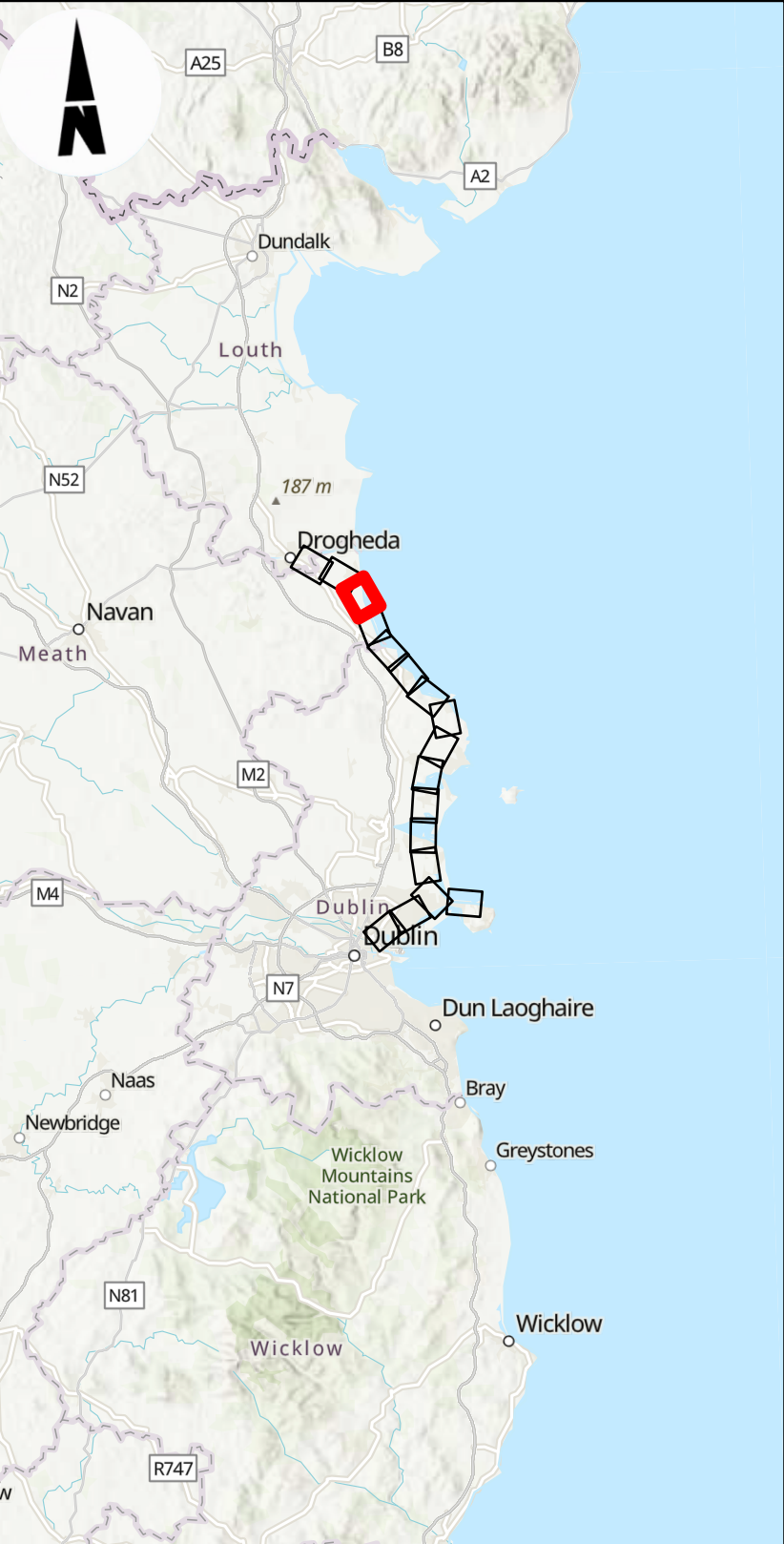
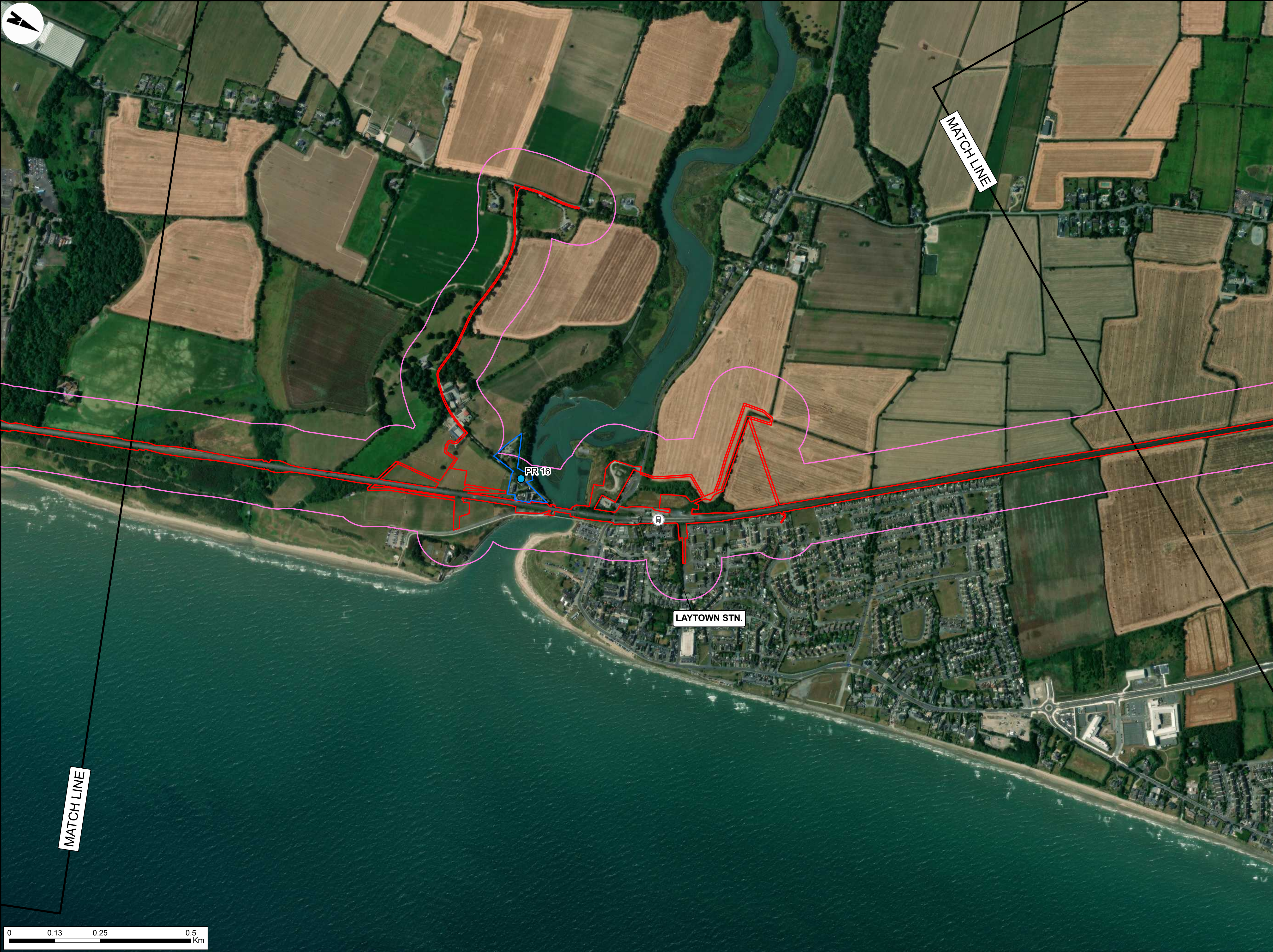
Engineering Designer		
<div>ARUP</div>		
Drawn	Checked	Approved
DM	TB	COD
QMS Code		
279933-00		

Project Title			
DART+ COASTAL NORTH			
Drawing Title			
LANDSCAPE AND VISUAL AMENITY FIGURE 15.2: SIGNIFICANT EFFECTS ON RESIDENTIAL RECEPTORS			
Drawing File Name	Sheet Number	Status	Rev
D+WP56-ARP-ZZ-NL-DR-EVLA-100014	14 of 18	S4	P02

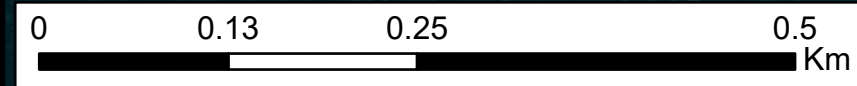


- LEGEND**
- RAILWAY STATIONS
 - DEVELOPMENT BOUNDARY
 - 100M BUFFER
 - RESIDENTIAL RECEPTORS (MODERATE-SIGNIFICANT PRE-MITIGATION EFFECT)
 - RESIDENTIAL RECEPTOR GROUPS

<div>Disclaimer</div> <div>© Irish Rail (2023). This drawing is confidential and the copyright in it is owned by Irish Rail. This drawing must not be either loaned, copied or otherwise reproduced in whole or in part or used for any purpose without the prior permission of Irish Rail.</div> <div>© OpenStreetMap contributors.</div> <div>© Ordnance Survey Ireland and Government of Ireland. All O.S. data used for plans are printed under "Copyright Ordnance Survey Ireland 0039723 (OSI Aerial Data or OSI Lidar Data) & 2023/ OSI_NMA_180 (OSI Vector Data)". All elevations are in metres and relate to OSI Geoid Model (OSGM02) Malin Head as defined by existing Project Control. All Co-ordinates are in Irish Transverse Mercator Grid (ITM) as defined by OSI active GPS station Tallaght College (TLLG).</div> <div>© Ordnance Survey Ireland and Government of Ireland. All O.S. data used for plans are printed under "Copyright Ordnance Survey Ireland 0039723 (OSI Aerial Data or OSI Lidar Data) & 2023/ OSI_NMA_180 (OSI Vector Data)". All elevations are in metres and relate to OSI Geoid Model (OSGM02) Malin Head as defined by existing Project Control. All Co-ordinates are in Irish Transverse Mercator Grid (ITM) as defined by OSI active GPS station Tallaght College (TLLG).</div>										<div>NOTES</div>										<div><div><div><div><div><div></div><div></div><div></div></div><div></div></div><div>DART+ Coastal North</div></div><div><div><div><div><div></div><div></div><div></div></div><div></div></div><div>NTA</div><div>Údarás Náisiúnta Iompair National Transport Authority</div></div><div><div><div><div></div><div></div><div></div></div><div></div></div><div>Tionscadal Éireann Project Ireland 2040</div></div></div></div></div>										<table><tr><th>Rev</th><th>Date</th><th>Dm</th><th>Chk'd</th><th>App'd</th><th>Description</th></tr><tr><td>P02</td><td>31/05/2024</td><td>DM</td><td>TB</td><td>COD</td><td>PLANNING ISSUE</td></tr><tr><td> </td><td> </td><td> </td><td> </td><td> </td><td> </td></tr><tr><td> </td><td> </td><td> </td><td> </td><td> </td><td> </td></tr><tr><td> </td><td> </td><td> </td><td> </td><td> </td><td> </td></tr><tr><td> </td><td> </td><td> </td><td> </td><td> </td><td> </td></tr><tr><td> </td><td> </td><td> </td><td> </td><td> </td><td> </td></tr></table>										Rev	Date	Dm	Chk'd	App'd	Description	P02	31/05/2024	DM	TB	COD	PLANNING ISSUE																															<div>Client</div> <div><div><div><div></div><div></div><div></div></div><div></div></div><div>larnród Éireann Irish Rail</div></div>										<div>Engineering Designer</div> <div><div><div><div></div><div></div><div></div></div><div></div></div><div>ARUP</div></div>										<div>Project Title</div> <div>DART+ COASTAL NORTH</div>										<div>Drawing Title</div> <div>LANDSCAPE AND VISUAL AMENITY FIGURE 15.2: SIGNIFICANT EFFECTS ON RESIDENTIAL RECEPTORS</div>										<div>Date</div> <div>05/10/2023</div>										<div>Scale</div> <div>1:5000 @ A1 1:10000 @ A3</div>										<div>Drawn</div> <div>DM</div>										<div>Checked</div> <div>TB</div>										<div>Approved</div> <div>COD</div>										<div>Project Code</div> <div>D+WP56</div>										<div>Originator Code</div> <div>ARP</div>										<div>QMS Code</div> <div>279933-00</div>										<div>Drawing File Name</div> <div>D+WP56-ARP-ZZ-NL-DR-EVLA-100015</div>										<div>Sheet Number</div> <div>15 of 18</div>										<div>Status</div> <div>S4</div>										<div>Rev</div> <div>P02</div>									
Rev	Date	Dm	Chk'd	App'd	Description																																																																																																																																																																																																																																												
P02	31/05/2024	DM	TB	COD	PLANNING ISSUE																																																																																																																																																																																																																																												



- LEGEND**
- RAILWAY STATIONS
 - DEVELOPMENT BOUNDARY
 - 100M BUFFER
 - RESIDENTIAL RECEPTORS
(MODERATE-SIGNIFICANT
PRE-MITIGATION EFFECT)
 - RESIDENTIAL RECEPTOR
GROUPS




Disclaimers
© Irish Rail (2023). This drawing is confidential and the copyright in it is owned by Irish Rail. This drawing must not be either loaned, copied or otherwise reproduced in whole or in part or used for any purpose without the prior permission of Irish Rail.
© Ordnance Survey Ireland and Government of Ireland. All O.S. data used for plans are printed under "Copyright Ordnance Survey Ireland 0039723 (OSI Aerial Data or OSI Lidar Data) & 2023/ OSI_NMA_180 (OSI Vector Data)". All elevations are in metres and relate to OSI Geoid Model (OSGM02) Malin Head as defined by existing Project Control. All Co-ordinates are in Irish Transverse Mercator Grid (ITM) as defined by OSI active GPS station Tallaght College (TLLG).

NOTES




Rev	Date	Dm	Chk'd	App'd	Description
P02	31/05/2024	DM	TB	COD	PLANNING ISSUE



Date05/10/2023

Scale1:5000 @ A1
1:10000 @ A3



Engineering Designer

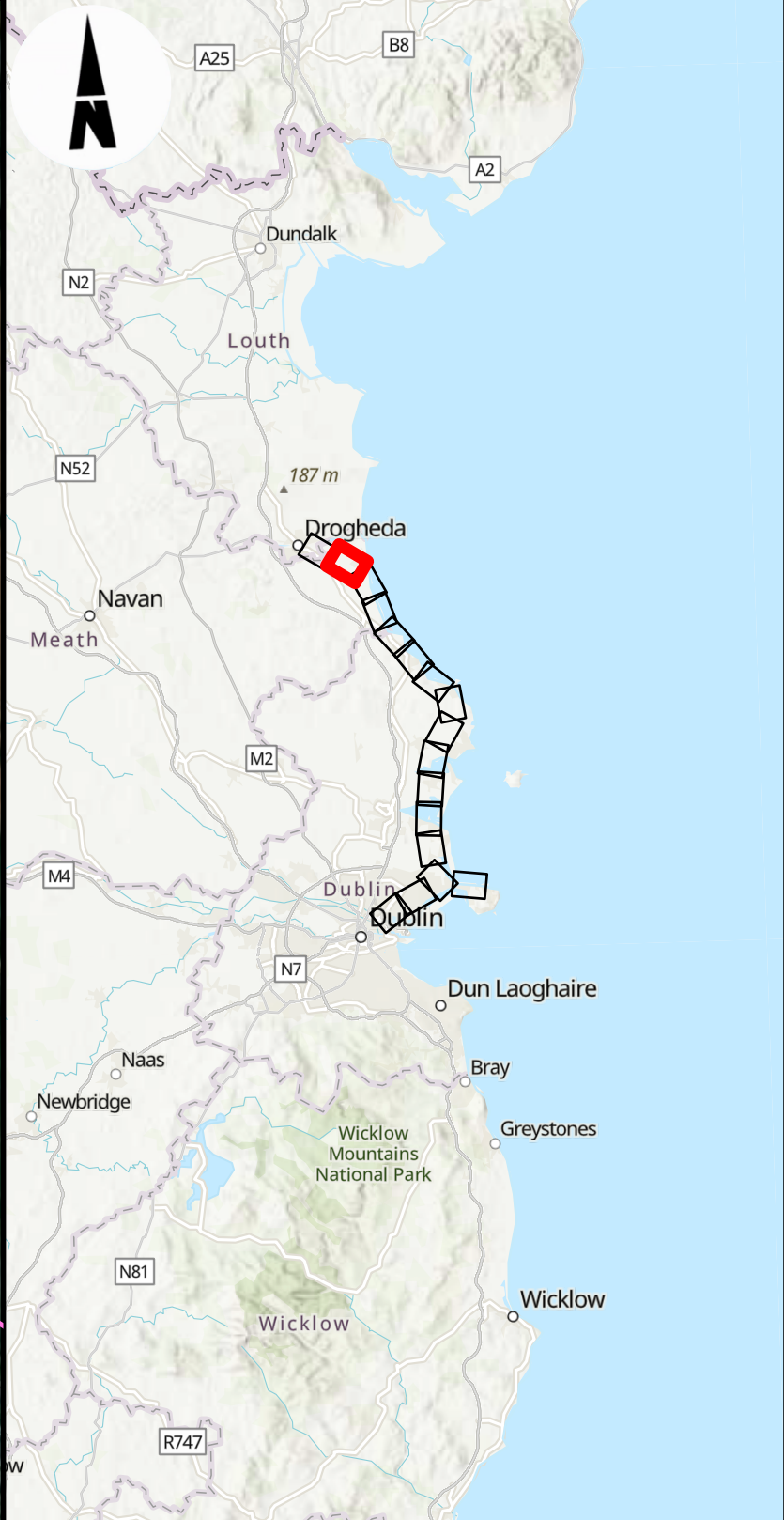
DMChecked TBApproved COD

Project CodeD+WP56

Originator CodeARP

GMS Code279933-00

Project Title			
DART+ COASTAL NORTH			
Drawing Title			
LANDSCAPE AND VISUAL AMENITY FIGURE 15.2: SIGNIFICANT EFFECTS ON RESIDENTIAL RECEPTORS			
Drawing File Name		Sheet Number	Status
D+WP56-ARP-ZZ-NL-DR-EVLA-100016		16 of 18	S4
Rev		Rev	
P02		P02	



- LEGEND**
- DEVELOPMENT BOUNDARY
 - 100M BUFFER
 - RESIDENTIAL RECEPTORS
(MODERATE-SIGNIFICANT
PRE-MITIGATION EFFECT)
 - RESIDENTIAL RECEPTOR
GROUPS

Disclaimer
© Irish Rail (2023). This drawing is confidential and the copyright in it is owned by Irish Rail. This drawing must not be either loaned, copied or otherwise reproduced in whole or in part or used for any purpose without the prior permission of Irish Rail.

© Ordnance Survey Ireland and Government of Ireland. All O.S. data used for plans are printed under "Copyright Ordnance Survey Ireland 0039723 (OSI Aerial Data or OSI Lidar Data) & 2023/ OSI_NMA_180 (OSI Vector Data)". All elevations are in metres and relate to OSI Geoid Model (OSGM02) Malin Head as defined by existing Project Control. All Co-ordinates are in Irish Transverse Mercator Grid (ITM) as defined by OSI active GPS station Tallaght College (TLLG).

NOTES

Rev	Date	Dm	Chk'd	App'd	Description
P02	31/05/2024	DM	TB	COD	PLANNING ISSUE

Date05/10/2023Scale1:5000 @ A1
1:10000 @ A3

Engineering Designer

Drawn DMChecked TBApproved COD

Project CodeD+WP56

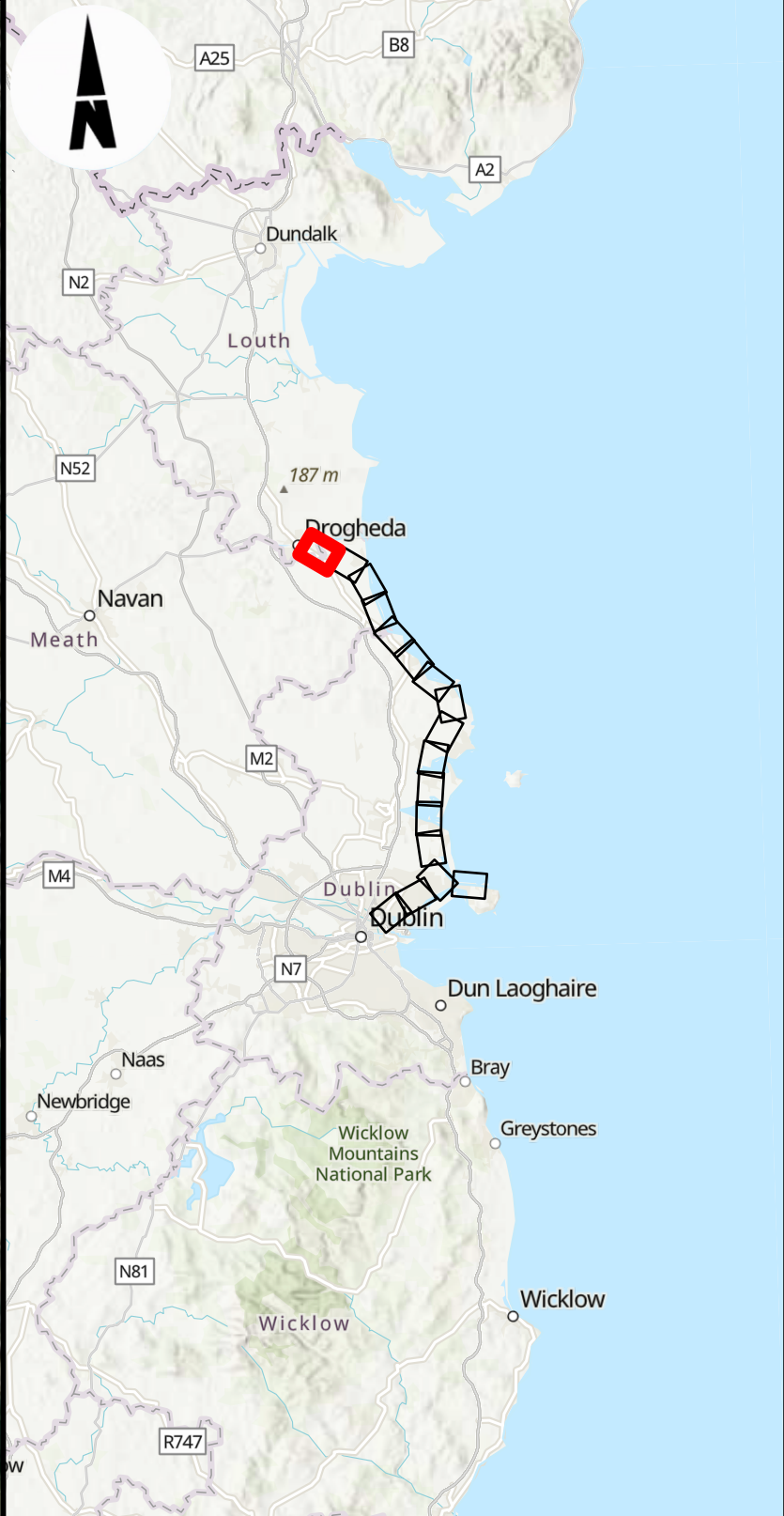
Originator CodeARP

QMS Code279933-00

Project Title			
DART+ COASTAL NORTH			
Drawing Title			
LANDSCAPE AND VISUAL AMENITY FIGURE 15.2: SIGNIFICANT EFFECTS ON RESIDENTIAL RECEPTORS			
Drawing File Name	Sheet Number	Status	Rev
D+WP56-ARP-ZZ-NL-DR-EVLA-100017	17 of 18	S4	P02



MATCH LINE



- LEGEND**
- RAILWAY STATIONS
 - DEVELOPMENT BOUNDARY
 - 100M BUFFER
 - RESIDENTIAL RECEPTORS
(MODERATE-SIGNIFICANT PRE-MITIGATION EFFECT)
 - RESIDENTIAL RECEPTOR GROUPS

0 0.13 0.25 0.5 Km

Disclaimer
© Irish Rail (2023). This drawing is confidential and the copyright in it is owned by Irish Rail. This drawing must not be either loaned, copied or otherwise reproduced in whole or in part or used for any purpose without the prior permission of Irish Rail.

© OpenStreetMap contributors.

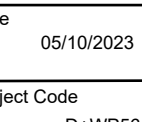
© Ordnance Survey Ireland and Government of Ireland. All O.S. data used for plans are printed under "Copyright Ordnance Survey Ireland 0039723 (OSI Aerial Data or OSI Lidar Data) & 2023/ OSI_NMA_180 (OSI Vector Data)". All elevations are in metres and relate to OSI Geoid Model (OSGM02) Malin Head as defined by existing Project Control. All Co-ordinates are in Irish Transverse Mercator Grid (ITM) as defined by OSI active GPS station Tallaght College (TLLG).

NOTES



Tionscadal Éireann
Project Ireland
2040

Rev	Date	Dm	Chk'd	App'd	Description
P02	31/05/2024	DM	TB	COD	PLANNING ISSUE



Date
05/10/2023

Scale
1:5000 @ A1
1:10000 @ A3

Project Code
D+WP56

Originator Code
ARP

Engineering Designer



Drawn

DM

Checked

TB

Approved

COD

QMS Code

279933-00

Project Title

DART+ COASTAL NORTH

Drawing Title

LANDSCAPE AND VISUAL AMENITY
FIGURE 15.2: SIGNIFICANT EFFECTS ON RESIDENTIAL RECEPTORS

Drawing File Name

D+WP56-ARP-ZZ-NL-DR-EVLA-100018

Sheet Number

18 of 18

Status

S4

Rev

P02